

## Recombinant Human SFTPA1 Protein (Glu21-Phe248), N-His tagged

Cat. No. SFTPA1-6308H Lot. No. (See product label)

### SPECIFICATION

<b>Product Overview</b>	Recombinant human SFTPA1 (Glu21-Phe248) fused with the N-His tag was expressed in E. coli.
<b>Species</b>	Human
<b>Source</b>	E.coli
<b>ProteinLength</b>	Glu21-Phe248
<b>Form</b>	Lyophilized powder/frozen liquid
<b>Molecular Mass</b>	26.48 kDa
<b>Purity</b>	> 90 % as determined by SDS-PAGE
<b>Notes</b>	For research use only.
<b>Storage</b>	Use a manual defrost freezer and avoid repeated freeze thaw cycles. Store at 2 to 8 centigrade for one week. Store at -20 to -80 centigrade for twelve months from the date of receipt.
<b>Storage Buffer</b>	0.01M PBS, pH 7.4, 0.02 % NLS
<b>Reconstitution</b>	Reconstitute in sterile water for a stock solution.

 Tel: 1-631-559-9269 1-516-512-3133

 Email: [info@creative-biomart.com](mailto:info@creative-biomart.com)  Fax: 1-631-938-8127

 45-1 Ramsey Road, Shirley, NY 11967, USA

**Shipping** They are shipped out with dry ice/blue ice unless customers require otherwise.

## GENE INFORMATION

**Gene Name** [SFTPA1 surfactant protein A1 \[ Homo sapiens \(human\) \]](#)

**Official Symbol** [SFTPA1](#)

**Synonyms**

SFTPA1; surfactant protein A1; SFTP1, surfactant, pulmonary associated protein A1; pulmonary surfactant-associated protein A1; COLEC4; SP A; SP A1; surfactant; pulmonary associated protein A1A; collectin-4; surfactant protein A1B; alveolar proteinosis protein; surfactant protein A1 variant AD 6A; surfactant protein A1 variant AD 6A2; surfactant protein A1 variant AD 6A3; surfactant protein A1 variant AD 6A4; surfactant protein A1 variant ACD 6A2; surfactant protein A1 variant ACD 6A3; surfactant protein A1 variant ACD 6A4; surfactant protein A1 variant ABD 6A2; surfactant protein A1 variant ABD 6A3; surfactant protein A1 variant ABD 6A4; surfactant, pulmonary-associated protein A1A; surfactant, pulmonary-associated protein A1B; 35 kDa pulmonary surfactant-associated protein; SPA; PSAP; PSPA; SP-A; SPA1; PSP-A; SFTP1; SP-A1; SFTPA1B; FLJ50593; FLJ51913; FLJ61144; FLJ77898; FLJ79095; FLJ99559; MGC133365; MGC198590;

**Gene ID** [653509](#)

**mRNA Refseq** [NM\\_001093770](#)

**Protein Refseq** [NP\\_001087239](#)

**MIM** [178630](#)

**UniProt ID** [Q8IWL2](#)

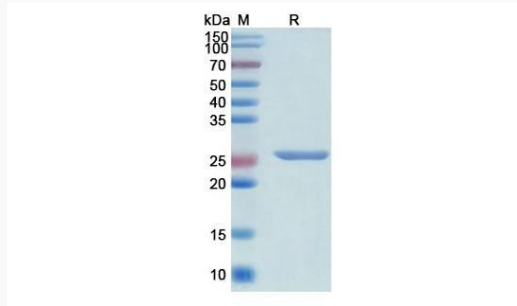
 Tel: 1-631-559-9269 1-516-512-3133

 Email: [info@creative-biomart.com](mailto:info@creative-biomart.com)  Fax: 1-631-938-8127

 45-1 Ramsey Road, Shirley, NY 11967, USA



SDS-PAGE



Tel: 1-631-559-9269 1-516-512-3133

Email: [info@creative-biomart.com](mailto:info@creative-biomart.com) Fax: 1-631-938-8127

45-1 Ramsey Road, Shirley, NY 11967, USA