

Recombinant Human SFTPA2 Protein, Myc/DDK-tagged, C13 and N15-labeled

Cat. No. SFTPA2-4609H **Lot. No.** (See product label)

SPECIFICATION

Product Overview

SFTPA2 MS Standard C13 and N15-labeled recombinant protein (NP_001092138) with a C-terminal MYC/DDK tag, was expressed in HEK293 cells.

Species

Human

Source

HEK293

Description

This gene is one of several genes encoding pulmonary-surfactant associated proteins (SFTPA) located on chromosome 10. Mutations in this gene and a highly similar gene located nearby, which affect the highly conserved carbohydrate recognition domain, are associated with idiopathic pulmonary fibrosis. The current version of the assembly displays only a single centromeric SFTPA gene pair rather than the two gene pairs shown in the previous assembly which were thought to have resulted from a duplication.

Molecular Mass

26 kDa

AA Sequence

MWLCPLALTLILMAASGAACEVKDVCVGVSPGIPGTPGSHGLPGRDGRDGVKGD
 PPGPMGPPGETPCPPGNGLPGAPGVGERGEKGEAGERGPPGLPAHLDEELQA
 TLHDFRHQILQTRGALSLQGSIMTVGEKVFSSNGQSITFDAIQEACARAGGRIAVPRN
 PEENEAIASFVKKYNTYAYVGLTEGSPGDFRYSDGTPVNYTNWYRGEPAGRGKE
 QCVEMYTDGQWDRNCLYSRLTICEFTRTRPLEQKLISEEDLAANDILDYKDDDDKV

Purity

> 80% as determined by SDS-PAGE and Coomassie blue staining

 Tel: 1-631-559-9269 1-516-512-3133

 Email: info@creative-biomart.com  Fax: 1-631-938-8127

 45-1 Ramsey Road, Shirley, NY 11967, USA

Stability	Stable for 3 months from receipt of products under proper storage and handling conditions.
Storage	Store at -80 centigrade. Avoid repeated freeze-thaw cycles.
Concentration	50 µg/mL as determined by BCA
Storage Buffer	100 mM glycine, 25 mM Tris-HCl, pH 7.3.

GENE INFORMATION

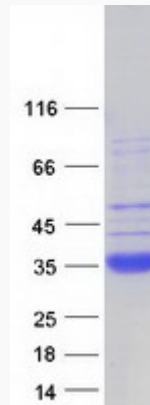
Gene Name	SFTPA2 surfactant protein A2 [Homo sapiens (human)]
Official Symbol	SFTPA2
Synonyms	SFTPA2; surfactant protein A2; PSAP; PSPA; SP-A; SPA2; PSP-A; SFTP1; SP-2A; SPAll; COLEC5; SFTPA2B; pulmonary surfactant-associated protein A2; 35 kDa pulmonary surfactant-associated protein; alveolar proteinosis protein; collectin 5; surfactant, pulmonary-associated protein A2A
Gene ID	729238
mRNA Refseq	NM_001098668
Protein Refseq	NP_001092138
MIM	178642
UniProt ID	Q8IWL1

 Tel: 1-631-559-9269 1-516-512-3133

 Email: info@creative-biomart.com  Fax: 1-631-938-8127

 45-1 Ramsey Road, Shirley, NY 11967, USA

SDS-PAGE



 Tel: 1-631-559-9269 1-516-512-3133

 Email: info@creative-biomart.com  Fax: 1-631-938-8127

 45-1 Ramsey Road, Shirley, NY 11967, USA