

Recombinant Human SFTPB Protein, Myc/DDK-tagged, C13 and N15-labeled

Cat. No. SFTPB-1980H Lot. No. (See product label)

SPECIFICATION

Product Overview	SFTPB MS Standard C13 and N15-labeled recombinant protein (NP_942140) with a C-terminal MYC/DDK tag, was expressed in HEK293 cells.
Species	Human
Source	HEK293
Description	<p>This gene encodes the pulmonary-associated surfactant protein B (SPB), an amphipathic surfactant protein essential for lung function and homeostasis after birth. Pulmonary surfactant is a surface-active lipoprotein complex composed of 90% lipids and 10% proteins which include plasma proteins and apolipoproteins SPA, SPB, SPC and SPD. The surfactant is secreted by the alveolar cells of the lung and maintains the stability of pulmonary tissue by reducing the surface tension of fluids that coat the lung. The SPB enhances the rate of spreading and increases the stability of surfactant monolayers in vitro. Multiple mutations in this gene have been identified, which cause pulmonary surfactant metabolism dysfunction type 1, also called pulmonary alveolar proteinosis due to surfactant protein B deficiency, and are associated with fatal respiratory distress in the neonatal period. Alternatively spliced transcript variants encoding the same protein have been identified.</p>
Molecular Mass	42.1 kDa
AA Sequence	MAESHELLQWLLLLLPTLCGPGTAAWTTSSLACAQGPEFWCQSLEQALQCRAHGHC

 Tel: 1-631-559-9269 1-516-512-3133

 Email: info@creative-biomart.com  Fax: 1-631-938-8127

 45-1 Ramsey Road, Shirley, NY 11967, USA

LQEVWGHVVGADDLCQECEDIVHILNKMAKEAIFQDTMRKFLEQECNVLPLKLLMPQ
 CNQVLDDYFPLVIDYFQNQTDSNGICMHLGLCKSRQPEPEQEPGMSDPLPKPLRDP
 LPDPLLDKLVLPVLPALQARPGPHTQDLSEQQFPIPLPYCWLCRALIKRIQAMIPKG
 ALAVAVAQVCRVVPLVAGGICQCLAERYSVILLDTLLGRMLPQLVCRLLVLRCSMDDS
 AGPRSPTGEWLPRDSECHLCMSVTTQAGNSSEQAIPQAMLQACVGSWLDREKCK
 QFVEQHTPQLLTLVPRGWDAAHTTCQALGVCGTMSSPLQCIHSPDLTRTRPLEQKLIS
 EEDLAANDILDYKDDDDKV

Purity > 80% as determined by SDS-PAGE and Coomassie blue staining

Stability Stable for 3 months from receipt of products under proper storage and handling conditions.

Storage Store at -80 centigrade. Avoid repeated freeze-thaw cycles.

Concentration 50 µg/mL as determined by BCA

Storage Buffer 100 mM glycine, 25 mM Tris-HCl, pH 7.3.

GENE INFORMATION

Gene Name [SFTPB surfactant protein B \[Homo sapiens \(human\) \]](#)

Official Symbol [SFTPB](#)

Synonyms SFTPB; surfactant protein B; SFTP3, surfactant, pulmonary associated protein B; pulmonary surfactant-associated protein B; SP B; 6 kDa protein; 18 kDa pulmonary-surfactant protein; pulmonary surfactant-associated proteolipid SPL(Phe); SP-B; PSP-B; SFTB3; SFTP3; SMDP1;

Gene ID [6439](#)

 Tel: 1-631-559-9269 1-516-512-3133

 Email: info@creative-biomart.com  Fax: 1-631-938-8127

 45-1 Ramsey Road, Shirley, NY 11967, USA

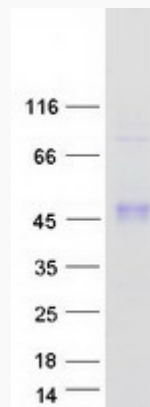
mRNA Refseq [NM_198843](#)

Protein Refseq [NP_942140](#)

MIM [178640](#)

UniProt ID [P07988](#)

SDS-PAGE



 Tel: 1-631-559-9269 1-516-512-3133

 Email: info@creative-biomart.com  Fax: 1-631-938-8127

 45-1 Ramsey Road, Shirley, NY 11967, USA