

Recombinant Full Length Human SFTPB Protein, C-Flag-tagged

Cat. No. SFTPB-247HFL Lot. No. (See product label)

SPECIFICATION

Product Overview

Recombinant Full Length Human SFTPB Protein, fused to Flag-tag at C-terminus, was expressed in Mammalian cells.

Species

Human

Source

Mammalian Cells

Description

This gene encodes the pulmonary-associated surfactant protein B (SPB), an amphipathic surfactant protein essential for lung function and homeostasis after birth. Pulmonary surfactant is a surface-active lipoprotein complex composed of 90% lipids and 10% proteins which include plasma proteins and apolipoproteins SPA, SPB, SPC and SPD. The surfactant is secreted by the alveolar cells of the lung and maintains the stability of pulmonary tissue by reducing the surface tension of fluids that coat the lung. The SPB enhances the rate of spreading and increases the stability of surfactant monolayers in vitro. Multiple mutations in this gene have been identified, which cause pulmonary surfactant metabolism dysfunction type 1, also called pulmonary alveolar proteinosis due to surfactant protein B deficiency, and are associated with fatal respiratory distress in the neonatal period. Alternatively spliced transcript variants encoding the same protein have been identified.

Form

25 mM Tris HCl, pH 7.3, 100 mM glycine, 10% glycerol.

Molecular Mass

39.5 kDa

 Tel: 1-631-559-9269 1-516-512-3133

 Email: info@creative-biomart.com  Fax: 1-631-938-8127

 45-1 Ramsey Road, Shirley, NY 11967, USA

AA Sequence

MAESHLQWLLLLLPTLCGPGTAAWTTSSLACAQGPEFWCQSLEQALQCRA LGHC
 LQEVWGHV GADDLCQ ECEDIVHILNKMAKEAIFQDTMRKFLEQECNVLP LKLLMPQ
 CNQVLDDYFPLVIDYFQNQTDSNGICMHL GLCKSRQPEPEQEPGMSDPLPKPLRD
 PLPDPLLDKLVLPVLP GALQARPGPHTQDLSEQQFPIPLPYCWL CRALIKRIQAMIPK
 GALAVAVAQVCRVVPLVAGGICQCLAERYSVILLDTLLGRMLPQLVCRLVLRCSMD
 DSAGPRSPTGEWLPRDSECHLCMSVTTQAGNSSEQAIPQAMLQACVGSWLDREK
 CKQFVEQHTPQLLLTV
 PRGWD AHTTCQALGVC GTMSSPLQCIHSPDLTRTRPLEQKLISEEDLAANDILDYKD
 DDDKV

Purity > 80% as determined by SDS-PAGE and Coomassie blue staining.

Stability Stable for 12 months from the date of receipt of the product under proper storage and handling conditions. Avoid repeated freeze-thaw cycles.

Storage Store at -80 centigrade.

Concentration >50 ug/mL as determined by microplate BCA method.

Preparation Recombinant protein was captured through anti-DDK affinity column followed by conventional chromatography steps.

Protein Families Druggable Genome, Secreted Protein

Full Length Full L.

GENE INFORMATION

Gene Name [SFTPB surfactant protein B \[Homo sapiens \(human\) \]](#)

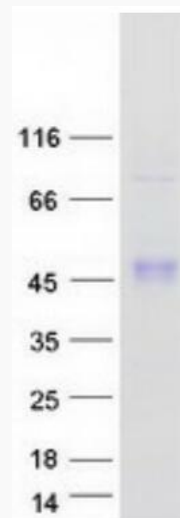
Official Symbol [SFTPB](#)

 Tel: 1-631-559-9269 1-516-512-3133

 Email: info@creative-biomart.com  Fax: 1-631-938-8127

 45-1 Ramsey Road, Shirley, NY 11967, USA

Synonyms	SP-B; PSP-B; SFTB3; SFTP3; SMDP1
Gene ID	6439
mRNA Refseq	NM_198843.3
Protein Refseq	NP_942140.3
MIM	178640
UniProt ID	P07988



Coomassie blue staining of purified SFTPB protein.

 Tel: 1-631-559-9269 1-516-512-3133

 Email: info@creative-biomart.com  Fax: 1-631-938-8127

 45-1 Ramsey Road, Shirley, NY 11967, USA