

Recombinant Human SFTPB Protein (201-279 aa), MBP-tagged

Cat. No. SFTPB-2810H Lot. No. (See product label)

SPECIFICATION

Product Overview	Recombinant Human SFTPB Protein (201-279 aa) is produced by Baculovirus expression system. This protein is fused with a MBP tag at the N-terminal. Research Area: Cardiovascular. Protein Description: Full Length of Mature Protein.
Species	Human
Source	Insect Cells
ProteinLength	201-279 aa
Description	Pulmonary surfactant-associated proteins promote alveolar stability by lowering the surface tension at the air-liquid interface in the peripheral air spaces. SP-B increases the collapse pressure of palmitic acid to nearly 70 millinewtons per meter.
Form	Tris-based buffer,50% glycerol
Molecular Mass	50.7 kDa
AA Sequence	FPIPLPYCWLCRALIKRIQAMIPK GALAVAVAQVCRVVPLVAGGICQCLAERYSVILLD TLLGRMLPQLVCRLVLRCSM
Purity	> 85% as determined by SDS-PAGE.
Notes	Repeated freezing and thawing is not recommended. Store working aliquots at 4 centigrade for up to one week.

 Tel: 1-631-559-9269 1-516-512-3133

 Email: info@creative-biomart.com  Fax: 1-631-938-8127

 45-1 Ramsey Road, Shirley, NY 11967, USA

Storage The shelf life is related to many factors, storage state, buffer ingredients, storage temperature and the stability of the protein itself. Generally, the shelf life of liquid form is 6 months at -20 centigrade/-80 centigrade. The shelf life of lyophilized form is 12 months at -20 centigrade/-80 centigrade.

Concentration A hardcopy of COA will be sent along with the products. Please refer to it for detailed information.

GENE INFORMATION

Gene Name SFTPB surfactant protein B [Homo sapiens]

Official Symbol SFTPB

Synonyms SFTPB; surfactant protein B; SP B; 6 kDa protein; SP-B; PSP-B; SFTB3; SFTP3; SMDP1;

Gene ID 6439

mRNA Refseq NM_000542

Protein Refseq NP_000533

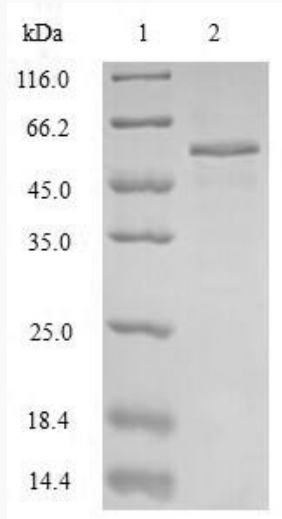
MIM 178640

UniProt ID P07988

 Tel: 1-631-559-9269 1-516-512-3133

 Email: info@creative-biomart.com  Fax: 1-631-938-8127

 45-1 Ramsey Road, Shirley, NY 11967, USA



(Tris-Glycine gel) Discontinuous SDS-PAGE (reduced) with 5% enrichment gel and 15% separation gel.

 Tel: 1-631-559-9269 1-516-512-3133

 Email: info@creative-biomart.com  Fax: 1-631-938-8127

 45-1 Ramsey Road, Shirley, NY 11967, USA