

## Recombinant Human SFTPC protein, His-tagged

Cat. No. SFTPC-5062H Lot. No. (See product label)

### SPECIFICATION

<b>Product Overview</b>	Recombinant Human SFTPC protein(P11686)(24-58aa), fused to N-terminal His tag, was expressed in HEK293.
<b>Species</b>	Human
<b>Source</b>	HEK293
<b>ProteinLength</b>	24-58aa
<b>Form</b>	If the delivery form is liquid, the default storage buffer is Tris/PBS-based buffer, 5%-50% glycerol. If the delivery form is lyophilized powder, the buffer before lyophilization is Tris/PBS-based buffer, 6% Trehalose, pH 8.0.
<b>Molecular Mass</b>	7.7 kDa
<b>Purity</b>	Greater than 90% as determined by SDS-PAGE.
<b>Storage</b>	Store at -20°C/-80°C upon receipt, aliquoting is necessary for multiple use. Avoid repeated freeze-thaw cycles.
<b>Reconstitution</b>	Please reconstitute protein in deionized sterile water to a concentration of 0.1-1.0 mg/mL. We recommend to add 5-50% of glycerol (final concentration) and aliquot for long-term storage at -20°C/-80°C. Our default final concentration of glycerol is 50%.

 Tel: 1-631-559-9269 1-516-512-3133

 Email: [info@creative-biomart.com](mailto:info@creative-biomart.com)  Fax: 1-631-938-8127

 45-1 Ramsey Road, Shirley, NY 11967, USA

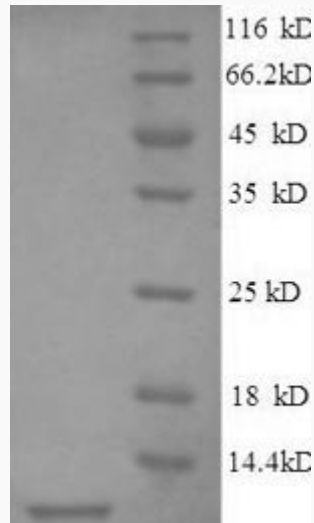
**GENE INFORMATION**

<b>Gene Name</b>	SFTPC surfactant protein C [ Homo sapiens ]
<b>Official Symbol</b>	SFTPC
<b>Synonyms</b>	SFTPC; surfactant protein C; SFTP2, surfactant, pulmonary associated protein C; pulmonary surfactant-associated protein C; PSP C; SMDP2; SP C; SP5; pulmonary surfactant apoprotein-2 SP-C; pulmonary surfactant-associated proteolipid SPL(Val); SP-C; PSP-C; SFTP2;
<b>Gene ID</b>	6440
<b>mRNA Refseq</b>	NM_001172357
<b>Protein Refseq</b>	NP_001165828
<b>MIM</b>	178620
<b>UniProt ID</b>	P11686

 Tel: 1-631-559-9269 1-516-512-3133 Email: [info@creative-biomart.com](mailto:info@creative-biomart.com)  Fax: 1-631-938-8127 45-1 Ramsey Road, Shirley, NY 11967, USA



SDS-PAGE



Tel: 1-631-559-9269 1-516-512-3133

Email: [info@creative-biomart.com](mailto:info@creative-biomart.com) Fax: 1-631-938-8127

45-1 Ramsey Road, Shirley, NY 11967, USA