

## Recombinant Human SFTPD protein, His-tagged

Cat. No. SFTPD-3868H Lot. No. (See product label)

### SPECIFICATION

<b>Product Overview</b>	Recombinant Human SFTPD protein(NP_003010.4)(Met 1-Phe 375) was expressed in HEK293, fused with a polyhistidine tag at the C-terminus.
<b>Species</b>	Human
<b>Source</b>	HEK293
<b>ProteinLength</b>	1-375 aa
<b>Form</b>	Lyophilized from sterile PBS, pH 7.4.
<b>Molecular Mass</b>	The form of human SFTPD consists of 366 amino acids and predicts a molecular mass of 37 kDa. In SDS-PAGE under reducing conditions, the apparent molecular mass of SFTPD is 47 kDa due to glycosylation.
<b>Endotoxin</b>	< 1.0 EU per µg of the protein as determined by the LAL method.
<b>Purity</b>	> 90 % as determined by SDS-PAGE
<b>Storage</b>	Store it under sterile conditions at -20°C to -80°C upon receiving. Recommend to aliquot the protein into smaller quantities for optimal storage. Avoid repeated freeze-thaw cycles.
<b>Reconstitution</b>	It is recommended that sterile water be added to the vial to prepare a stock solution of 0.2 ug/ul. Centrifuge the vial at 4°C before opening to recover the entire contents.

 Tel: 1-631-559-9269 1-516-512-3133

 Email: [info@creative-biomart.com](mailto:info@creative-biomart.com)  Fax: 1-631-938-8127

 45-1 Ramsey Road, Shirley, NY 11967, USA

**protein Refseq-Weblink** [http://www.ncbi.nlm.nih.gov/protein/NP\\_003010.4](http://www.ncbi.nlm.nih.gov/protein/NP_003010.4)

**Unit ID** P35247

**Unit ID-Weblink** <http://www.uniprot.org/uniprot/P35247>

## GENE INFORMATION

**Gene Name** [SFTPD surfactant protein D \[ Homo sapiens \]](#)

**Official Symbol** [SFTPD](#)

**Synonyms** SFTPD; surfactant protein D; SFTP4, surfactant, pulmonary associated protein D; pulmonary surfactant-associated protein D; COLEC7; SP D; collectin 7; collectin-7; lung surfactant protein D; pulmonary surfactant apoprotein; surfactant, pulmonary-associated protein D; surfactant-associated protein, pulmonary 4; SP-D; PSP-D; SFTP4;

**Gene ID** [6441](#)

**mRNA Refseq** [NM\\_003019](#)

**protein Refseq** NP\_003010

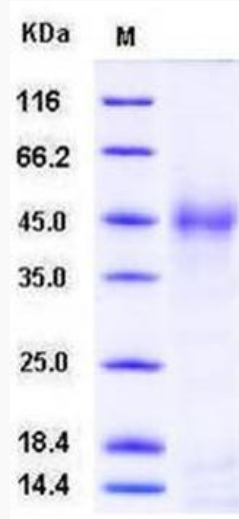
**MIM** [178635](#)

 Tel: 1-631-559-9269 1-516-512-3133

 Email: [info@creative-biomart.com](mailto:info@creative-biomart.com)  Fax: 1-631-938-8127

 45-1 Ramsey Road, Shirley, NY 11967, USA

SDS-PAGE



 Tel: 1-631-559-9269 1-516-512-3133

 Email: [info@creative-biomart.com](mailto:info@creative-biomart.com)  Fax: 1-631-938-8127

 45-1 Ramsey Road, Shirley, NY 11967, USA