

Recombinant Human SFTPD Protein (Ala21-Phe375, Glu22Gly), C-His tagged

Cat. No. SFTPD-5400H Lot. No. (See product label)

SPECIFICATION

Product Overview	Recombinant human SP-D (Ala21-Phe375, Glu22Gly) fused with the C-terminal His tag was expressed in mammalian cells.
Species	Human
Source	Mammalian Cells
ProteinLength	Ala21-Phe375, Glu22Gly
Form	Lyophilized powder/frozen liquid
Molecular Mass	39.05 kDa
Purity	> 90 % as determined by SDS-PAGE
Notes	For research use only.
Storage	Use a manual defrost freezer and avoid repeated freeze thaw cycles. Store at 2 to 8 centigrade for one week. Store at -20 to -80 centigrade for twelve months from the date of receipt.
Storage Buffer	Supplied as solution form in PBS or lyophilized from PBS.
Reconstitution	Reconstitute in sterile water for a stock solution.

 Tel: 1-631-559-9269 1-516-512-3133

 Email: info@creative-biomart.com  Fax: 1-631-938-8127

 45-1 Ramsey Road, Shirley, NY 11967, USA

Shipping They are shipped out with dry ice/blue ice unless customers require otherwise.

GENE INFORMATION

Gene Name [SFTPD surfactant protein D \[Homo sapiens \(human\) \]](#)

Official Symbol [SFTPD](#)

Synonyms SFTPD; surfactant protein D; SFTP4, surfactant, pulmonary associated protein D; pulmonary surfactant-associated protein D; COLEC7; SP D; collectin 7; collectin-7; lung surfactant protein D; pulmonary surfactant apoprotein; surfactant, pulmonary-associated protein D; surfactant-associated protein, pulmonary 4; SP-D; PSP-D; SFTP4;

Gene ID [6441](#)

mRNA Refseq [NM_003019](#)

Protein Refseq [NP_003010](#)

MIM [178635](#)

UniProt ID [P35247](#)

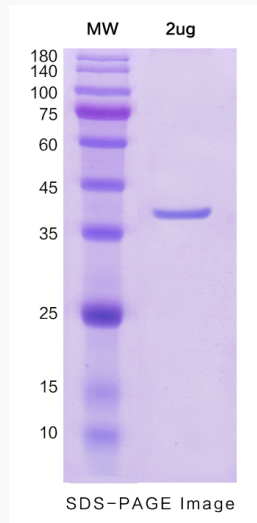
 Tel: 1-631-559-9269 1-516-512-3133

 Email: info@creative-biomart.com  Fax: 1-631-938-8127

 45-1 Ramsey Road, Shirley, NY 11967, USA



SDS-PAGE



Tel: 1-631-559-9269 1-516-512-3133

Email: info@creative-biomart.com Fax: 1-631-938-8127

45-1 Ramsey Road, Shirley, NY 11967, USA