

Recombinant Human SFXN3 Protein, Myc/DDK-tagged, C13 and N15-labeled

Cat. No. SFXN3-1008H Lot. No. (See product label)

SPECIFICATION

Product Overview	SFXN3 MS Standard C13 and N15-labeled recombinant protein (NP_112233) with a C-terminal MYC/DDK tag, was expressed in HEK293 cells.
Species	Human
Source	HEK293
Description	Potential iron transporter.
Molecular Mass	36 kDa
AA Sequence	MESKMGELPLDINIQEPRWDQSTFLGRARHFFTVTDPRNLLLSGAQLEASRNIVQNY RAGVVTPGITEDQLWRKYVYDSAFHPDTGEKVVLIGRMSAQVPMNMTITGCMLTF YRKTPTVFWQWVNQSFNAIVNYSNRSGDTPITVRQLGTAYVSATTGAVATALGLK SLTKHLPPLVGRFVPFAAVAAANCINIPLMRQRELQVGIPVADEAGQRLGYSVTAAK QGIFQVVISRICMAIPAMAIPPLIMDTLEKKDFLKRPPWLGAPLQVGLVGFCLVFATPL CCALFPQKSSIHISNLEPELRAQIHEQNPSVEVVYYNKGLTRTRPLEQKLISEEDLAA NDILDYKDDDDKV
Purity	> 80% as determined by SDS-PAGE and Coomassie blue staining
Stability	Stable for 3 months from receipt of products under proper storage and handling conditions.

 Tel: 1-631-559-9269 1-516-512-3133

 Email: info@creative-biomart.com  Fax: 1-631-938-8127

 45-1 Ramsey Road, Shirley, NY 11967, USA

Storage	Store at -80 centigrade. Avoid repeated freeze-thaw cycles.
----------------	---

Concentration	50 µg/mL as determined by BCA
----------------------	-------------------------------

Storage Buffer	100 mM glycine, 25 mM Tris-HCl, pH 7.3.
-----------------------	---

GENE INFORMATION

Gene Name	SFXN3 sideroflexin 3 [Homo sapiens (human)]
------------------	---

Official Symbol	SFXN3
------------------------	-------

Synonyms	SFXN3; sideroflexin 3; sideroflexin-3; SFX3; BA108L7.2;
-----------------	---

Gene ID	81855
----------------	-------

mRNA Refseq	NM_030971
--------------------	-----------

Protein Refseq	NP_112233
-----------------------	-----------

MIM	615571
------------	--------

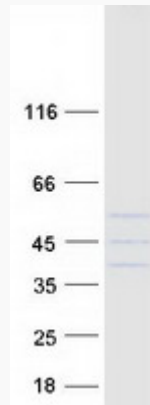
UniProt ID	Q9BWM7
-------------------	--------

 Tel: 1-631-559-9269 1-516-512-3133

 Email: info@creative-biomart.com  Fax: 1-631-938-8127

 45-1 Ramsey Road, Shirley, NY 11967, USA

SDS-PAGE



 Tel: 1-631-559-9269 1-516-512-3133

 Email: info@creative-biomart.com  Fax: 1-631-938-8127

 45-1 Ramsey Road, Shirley, NY 11967, USA