

## Recombinant Human SFXN3 Protein, His-tagged

Cat. No. SFXN3-2688H Lot. No. (See product label)

### SPECIFICATION

|                         |   |
|-------------------------|---|
| <b>Product Overview</b> | Recombinant Human SFXN3 Protein (Met1-Gln145) with a N-His tag was expressed in E. coli.  |
| <b>Species</b>          | Human   |
| <b>Source</b>           | E.coli  |
| <b>ProteinLength</b>    | Met1-Gln145   |
| <b>Description</b>      | Enables serine transmembrane transporter activity. Involved in serine import into mitochondrion. Located in mitochondrion.  |
| <b>Form</b>             | Freeze-dried powder   |
| <b>Molecular Mass</b>   | Predicted Molecular Mass: 20.3 kDa<br>Accurate Molecular Mass: 25 kDa   |
| <b>Endotoxin</b>        | <1.0 EU per 1g (determined by the LAL method).  |
| <b>Purity</b>           | > 95%   |
| <b>Applications</b>     | Positive Control; Immunogen; SDS-PAGE; WB.  |
| <b>Stability</b>        | The thermal stability is described by the loss rate. The loss rate was determined by accelerated thermal degradation test, that is, incubate the protein at 37 centigrade for |

 Tel: 1-631-559-9269 1-516-512-3133

 Email: [info@creative-biomart.com](mailto:info@creative-biomart.com)  Fax: 1-631-938-8127

 45-1 Ramsey Road, Shirley, NY 11967, USA

48h, and no obvious degradation and precipitation were observed. The loss rate is less than 5% within the expiration date under appropriate storage condition.

**Storage**

Avoid repeated freeze/thaw cycles. Store at 2-8 centigrade for one month. Aliquot and store at -80 centigrade for 12 months.

**Storage Buffer**

20mM Tris, 150mM NaCl, pH8.0, containing 1mM EDTA, 1mM DTT, 0.01% SKL, 5% Trehalose and Proclin300.

**Reconstitution**

Reconstitute in 20mM Tris, 150mM NaCl (pH8.0) to a concentration of 0.1-1.0 mg/mL. Do not vortex.

## GENE INFORMATION

**Gene Name**

SFXN3 sideroflexin 3 [ Homo sapiens (human) ]

**Official Symbol**

SFXN3

**Synonyms**

SFXN3; sideroflexin 3; sideroflexin-3; SFX3; BA108L7.2;

**Gene ID**

81855

**mRNA Refseq**

NM\_030971

**Protein Refseq**

NP\_112233

**MIM**

615571

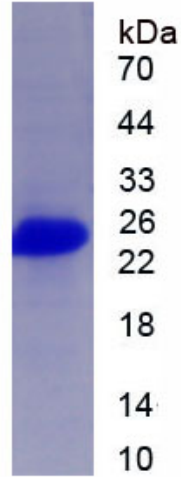
**UniProt ID**

Q9BWM7

 Tel: 1-631-559-9269 1-516-512-3133

 Email: [info@creative-biomart.com](mailto:info@creative-biomart.com)  Fax: 1-631-938-8127

 45-1 Ramsey Road, Shirley, NY 11967, USA



Tel: 1-631-559-9269 1-516-512-3133

Email: [info@creative-biomart.com](mailto:info@creative-biomart.com) Fax: 1-631-938-8127

45-1 Ramsey Road, Shirley, NY 11967, USA