

Recombinant Human SGCA Protein, Myc/DDK-tagged

Cat. No. SGCA-01H Lot. No. (See product label)

SPECIFICATION

Product Overview	Recombinant protein of human sarcoglycan, alpha (50kDa dystrophin-associated glycoprotein) (SGCA), transcript variant 1 with a C-Myc/DDK tag was expressed in HEK293T.
Species	Human
Source	HEK293
Description	This gene encodes a component of the dystrophin-glycoprotein complex (DGC), which is critical to the stability of muscle fiber membranes and to the linking of the actin cytoskeleton to the extracellular matrix. Its expression is thought to be restricted to striated muscle. Mutations in this gene result in type 2D autosomal recessive limb-girdle muscular dystrophy. Multiple transcript variants encoding different isoforms have been found for this gene.
Molecular Mass	40.4 kDa
Purity	> 80% as determined by SDS-PAGE and Coomassie blue staining
Stability	Stable for 12 months from the date of receipt of the product under proper storage and handling conditions. Avoid repeated freeze-thaw cycles.
Storage	Store at -80 centigrade.
Concentration	>50 µg/mL as determined by microplate BCA method

 Tel: 1-631-559-9269 1-516-512-3133

 Email: info@creative-biomart.com  Fax: 1-631-938-8127

 45-1 Ramsey Road, Shirley, NY 11967, USA

Storage Buffer 25 mM Tris.HCl, pH 7.3, 100 mM glycine, 10% glycerol

GENE INFORMATION

Gene Name SGCA sarcoglycan alpha [Homo sapiens (human)]

Official Symbol SGCA

Synonyms SGCA; sarcoglycan alpha; ADL; DAG2; 50DAG; DMDA2; LGMD2D; LGMDR3; SCARMD1; adhalin; alpha-sarcoglycan; 50 kDa dystrophin-associated glycoprotein; 50kD DAG; alpha-SG; dystroglycan-2; limb girdle muscular dystrophy 2D; sarcoglycan, alpha (50kDa dystrophin-associated glycoprotein)

Gene ID 6442

mRNA Refseq NM_000023

Protein Refseq NP_000014

MIM 600119

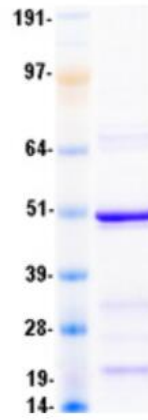
UniProt ID Q16586

 Tel: 1-631-559-9269 1-516-512-3133

 Email: info@creative-biomart.com  Fax: 1-631-938-8127

 45-1 Ramsey Road, Shirley, NY 11967, USA

SDS-PAGE



 Tel: 1-631-559-9269 1-516-512-3133

 Email: info@creative-biomart.com  Fax: 1-631-938-8127

 45-1 Ramsey Road, Shirley, NY 11967, USA