

Recombinant Human SGCA protein, His & GST-tagged

Cat. No. SGCA-1669H Lot. No. (See product label)

SPECIFICATION

Product Overview	Recombinant Human SGCA aa. (Gln24~His387 (Accession # Q16586)) fused with N-terminal His & GST tag was produced in E. coli cells.
Species	Human
Source	E.coli
ProteinLength	Gln24~His387
Description	This gene encodes a component of the dystrophin-glycoprotein complex (DGC), which is critical to the stability of muscle fiber membranes and to the linking of the actin cytoskeleton to the extracellular matrix. Its expression is thought to be restricted to striated muscle. Mutations in this gene result in type 2D autosomal recessive limb-girdle muscular dystrophy. Multiple transcript variants encoding different isoforms have been found for this gene.
Form	Freeze-dried powder
Molecular Mass	Predicted Molecular Mass: 70.4kDa
Endotoxin	<1.0EU per 1ug (determined by the LAL method)
Purity	>90%
Applications	SDS-PAGE; WB; ELISA; IP.

 Tel: 1-631-559-9269 1-516-512-3133

 Email: info@creative-biomart.com  Fax: 1-631-938-8127

 45-1 Ramsey Road, Shirley, NY 11967, USA

Stability	The thermal stability is described by the loss rate. The loss rate was determined by accelerated thermal degradation test, that is, incubate the protein at 37°C for 48h, and no obvious degradation and precipitation were observed. The loss rate is less than 5% within the expiration date under appropriate storage condition.
Storage	Avoid repeated freeze/thaw cycles. Store at 2-8°C for one month. Aliquot and store at -80°C for 12 months.
Storage buffer	Supplied as lyophilized form in 20mM Tris, 150mM NaCl, pH8.0, containing 1mM EDTA, 1mM DTT, 0.01% sarcosyl, 5% trehalose, and preservative.
Reconstitution	Reconstitute in sterile ddH ₂ O.
Isoelectric Point	5.7

GENE INFORMATION

Gene Name	SGCA sarcoglycan alpha [Homo sapiens (human)]
Official Symbol	SGCA
Synonyms	SGCA; sarcoglycan alpha; ADL; DAG2; 50DAG; DMDA2; LGMD2D; SCARMD1; adhalin; alpha-sarcoglycan; 50 kDa dystrophin-associated glycoprotein; 50kD DAG; alpha-SG; dystroglycan-2; limb girdle muscular dystrophy 2D; sarcoglycan, alpha (50kDa dystrophin-associated glycoprotein)
Gene ID	6442
mRNA Refseq	NM_000023.3
Protein Refseq	NP_000014.1

 Tel: 1-631-559-9269 1-516-512-3133

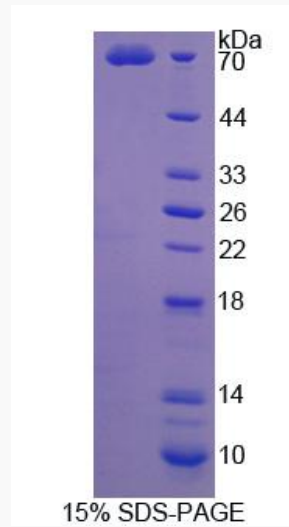
 Email: info@creative-biomart.com  Fax: 1-631-938-8127

 45-1 Ramsey Road, Shirley, NY 11967, USA

UniProt ID

Q16586

SDS-PAGE



 Tel: 1-631-559-9269 1-516-512-3133

 Email: info@creative-biomart.com  Fax: 1-631-938-8127

 45-1 Ramsey Road, Shirley, NY 11967, USA