

Recombinant Full Length Human SGCA Protein, C-Flag-tagged

Cat. No. SGCA-545HFL Lot. No. (See product label)

SPECIFICATION

Product Overview	Recombinant Full Length Human SGCA Protein, fused to Flag-tag at C-terminus, was expressed in Mammalian cells.
Species	Human
Source	Mammalian Cells
Description	This gene encodes a component of the dystrophin-glycoprotein complex (DGC), which is critical to the stability of muscle fiber membranes and to the linking of the actin cytoskeleton to the extracellular matrix. Its expression is thought to be restricted to striated muscle. Mutations in this gene result in type 2D autosomal recessive limb-girdle muscular dystrophy. Multiple transcript variants encoding different isoforms have been found for this gene.
Form	25 mM Tris HCl, pH 7.3, 100 mM glycine, 10% glycerol.
Molecular Mass	40.4 kDa
AA Sequence	MAETLFWTPLLVLLAGLGDTEAQQTTLHPLVGRVHVHTLDHETFLSLPEHVAVPPA VHITYHAHLQGHP DLPRWLRYTQRSPHHPGFLYGSATPEDRGLQVIEVTAYNRDSF DTTRQRLVLEIGDPEGPLLPYQAEFLV RSHDAEEVLPSTPASRFLSALGGLWEPGEL QLLNVTSAIDRGGRVPLPIEGRKEGVYIKVGSASPFSTCL KMVASPDSHARCAQQG PPLLSCYDTLAPHFRVDWCNVTLVDKSVPEPADEVPTPGDGILEHDPFFCPTTE AP DRDFLVDALVTLLVPLLVALLLTLLLAYVMCCRREGRLKRDLATSDIQMVHHCTIHGN TEELRQMAAS

 Tel: 1-631-559-9269 1-516-512-3133

 Email: info@creative-biomart.com  Fax: 1-631-938-8127

 45-1 Ramsey Road, Shirley, NY 11967, USA

	REVPRPLSTLPMFNVHTGERLPPRVDSAQVPLILDQHTRTRPLEQKLISEEDLAANDI LDYKDDDDKV
Purity	> 80% as determined by SDS-PAGE and Coomassie blue staining.
Stability	Stable for 12 months from the date of receipt of the product under proper storage and handling conditions. Avoid repeated freeze-thaw cycles.
Storage	Store at -80 centigrade.
Concentration	>50 ug/mL as determined by microplate BCA method.
Preparation	Recombinant protein was captured through anti-DDK affinity column followed by conventional chromatography steps.
Protein Families	Druggable Genome, Transmembrane
Protein Pathways	Arrhythmogenic right ventricular cardiomyopathy (ARVC), Dilated cardiomyopathy, Hypertrophic cardiomyopathy (HCM), Viral myocarditis
Full Length	Full L.
GENE INFORMATION	
Gene Name	SGCA sarcoglycan alpha [Homo sapiens (human)]
Official Symbol	SGCA
Synonyms	ADL; DAG2; 50DAG; DMDA2; LGMD2D; LGMDR3; SCARMD1; adhalin
Gene ID	6442

 Tel: 1-631-559-9269 1-516-512-3133

 Email: info@creative-biomart.com  Fax: 1-631-938-8127

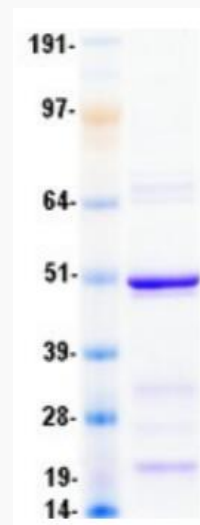
 45-1 Ramsey Road, Shirley, NY 11967, USA

mRNA Refseq [NM_000023.4](#)

Protein Refseq [NP_000014.1](#)

MIM [600119](#)

UniProt ID [Q16586](#)



Coomassie blue staining of purified SGCA protein.

 Tel: 1-631-559-9269 1-516-512-3133

 Email: info@creative-biomart.com  Fax: 1-631-938-8127

 45-1 Ramsey Road, Shirley, NY 11967, USA