

Recombinant Full Length Human SGCB Protein, C-Flag-tagged

Cat. No. SGCB-173HFL Lot. No. (See product label)

SPECIFICATION

Product Overview Recombinant Full Length Human SGCB Protein, fused to Flag-tag at C-terminus, was expressed in Mammalian cells.

Species Human

Source Mammalian Cells

Description This gene encodes a member of the sarcoglycan family. Sarcoglycans are transmembrane components in the dystrophin-glycoprotein complex which help stabilize the muscle fiber membranes and link the muscle cytoskeleton to the extracellular matrix. Mutations in this gene have been associated with limb-girdle muscular dystrophy.

Form 25 mM Tris HCl, pH 7.3, 100 mM glycine, 10% glycerol.

Molecular Mass 34.6 kDa

AA Sequence

```

MAAAAAAAAAEQSSNGPVKKSREKAVERRSVNKEHNSNFKAGYIPIDEDRLHKTG
LRGRKGNLAICVII LLFILAVINLIITLVIWAVIRIGPNGCDSMEFHESGLLRFKQVSDMG
VIHPLYKSTVGGRRNENLVITGN NQPIVFQQGTTKLSVENNKTSITSDIGMQFFDPRT
QNILFSTDYETHEFHLPSPGVKSLNVQKASTERITS NATSDLNIKVDGRAIVRGNEGVF
IMGKTIEFHMGGNMELKAENSIILNGSVMVSTTRLPSSSSGDQLGSG
DWVRYKLCMCADGTLFKVQVTSQNMGCQISDNPCGNTHTRTRPLEQKLISEEDLAA
NDILDYKDDDDKV
    
```

 Tel: 1-631-559-9269 1-516-512-3133

 Email: info@creative-biomart.com  Fax: 1-631-938-8127

 45-1 Ramsey Road, Shirley, NY 11967, USA

Purity	> 80% as determined by SDS-PAGE and Coomassie blue staining.
Stability	Stable for 12 months from the date of receipt of the product under proper storage and handling conditions. Avoid repeated freeze-thaw cycles.
Storage	Store at -80 centigrade.
Concentration	>50 ug/mL as determined by microplate BCA method.
Preparation	Recombinant protein was captured through anti-DDK affinity column followed by conventional chromatography steps.
Protein Families	Druggable Genome, Transmembrane
Protein Pathways	Arrhythmogenic right ventricular cardiomyopathy (ARVC), Dilated cardiomyopathy, Hypertrophic cardiomyopathy (HCM), Viral myocarditis
Full Length	Full L.

GENE INFORMATION

Gene Name	SGCB sarcoglycan beta [Homo sapiens (human)]
Official Symbol	SGCB
Synonyms	A3b; SGC; LGMD2E; LGMDR4
Gene ID	6443
mRNA Refseq	NM_000232.5

 Tel: 1-631-559-9269 1-516-512-3133

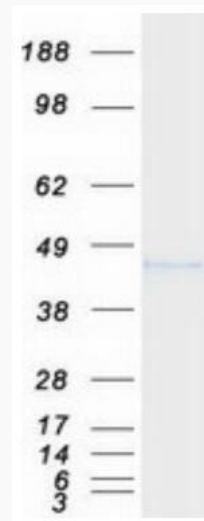
 Email: info@creative-biomart.com  Fax: 1-631-938-8127

 45-1 Ramsey Road, Shirley, NY 11967, USA

Protein Refseq NP_000223.1

MIM 600900

UniProt ID Q16585



Coomassie blue staining of purified SGCB protein.

 Tel: 1-631-559-9269 1-516-512-3133

 Email: info@creative-biomart.com  Fax: 1-631-938-8127

 45-1 Ramsey Road, Shirley, NY 11967, USA