

## Recombinant Human SGCB protein, His&T7-tagged

Cat. No. SGCB-76H Lot. No. (See product label)

### SPECIFICATION

<b>Product Overview</b>	Recombinant Human SGCB protein(Trp87~His318), fused with N-terminal His&T7 tag, was expressed in E. coli.
<b>Species</b>	Human
<b>Source</b>	E.coli
<b>ProteinLength</b>	Trp87~His318
<b>Form</b>	PBS, pH7.4, containing 0.01% SKL, 5% Trehalose.
<b>Molecular Mass</b>	30kDa
<b>Endotoxin</b>	<1.0EU per 1µg (determined by the LAL method)
<b>Purity</b>	> 90%
<b>Storage</b>	Avoid repeated freeze/thaw cycles. Store at 2-8°C for one month. Aliquot and store at -80°C for 12 months.
<b>Reconstitution</b>	Reconstitute in 10mM PBS (pH7.4) to a concentration of 0.1-1.0 mg/mL. Do not vortex.

### GENE INFORMATION

 Tel: 1-631-559-9269 1-516-512-3133

 Email: [info@creative-biomart.com](mailto:info@creative-biomart.com)  Fax: 1-631-938-8127

 45-1 Ramsey Road, Shirley, NY 11967, USA

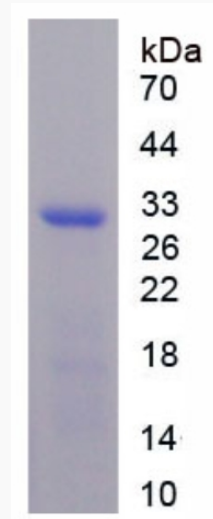
<b>Gene Name</b>	SGCB sarcoglycan, beta (43kDa dystrophin-associated glycoprotein) [ Homo sapiens ]
<b>Official Symbol</b>	SGCB
<b>Synonyms</b>	SGCB; sarcoglycan, beta (43kDa dystrophin-associated glycoprotein); LGMD2E, sarcoglycan, beta (43kD dystrophin associated glycoprotein); beta-sarcoglycan; A3b; SGC; 43DAG; beta-SG; 43 kDa dystrophin-associated glycoprotein; limb girdle muscular dystrophy 2E (non-linked families); beta-sarcoglycan(43kD dystrophin-associated glycoprotein); LGMD2E;
<b>Gene ID</b>	6443
<b>mRNA Refseq</b>	NM_000232
<b>Protein Refseq</b>	NP_000223
<b>MIM</b>	600900
<b>UniProt ID</b>	Q16585

 Tel: 1-631-559-9269 1-516-512-3133

 Email: [info@creative-biomart.com](mailto:info@creative-biomart.com)  Fax: 1-631-938-8127

 45-1 Ramsey Road, Shirley, NY 11967, USA

SDS-PAGE



 Tel: 1-631-559-9269 1-516-512-3133

 Email: [info@creative-biomart.com](mailto:info@creative-biomart.com)  Fax: 1-631-938-8127

 45-1 Ramsey Road, Shirley, NY 11967, USA