

Recombinant Full Length Human SGCG Protein, C-Flag-tagged

Cat. No. SGCG-1905HFL Lot. No. (See product label)

SPECIFICATION

Product Overview	Recombinant Full Length Human SGCG Protein, fused to Flag-tag at C-terminus, was expressed in Mammalian cells.
Species	Human
Source	Mammalian Cells
Description	This gene encodes gamma-sarcoglycan, one of several sarcolemmal transmembrane glycoproteins that interact with dystrophin. The dystrophin-glycoprotein complex (DGC) spans the sarcolemma and is comprised of dystrophin, syntrophin, alpha- and beta-dystroglycans and sarcoglycans. The DGC provides a structural link between the subsarcolemmal cytoskeleton and the extracellular matrix of muscle cells. Defects in the encoded protein can lead to early onset autosomal recessive muscular dystrophy, in particular limb-girdle muscular dystrophy, type 2C (LGMD2C).
Form	25 mM Tris HCl, pH 7.3, 100 mM glycine, 10% glycerol.
Molecular Mass	32.2 kDa
AA Sequence	MVREQYTTATEGICIERPENQYVYKIGIYGWRKRCLYLFVLLLLLILVVNLALTIWILKV MWFSPAGMGH LCVTKDGLRLEGESEFLFPLYAKEIHSRVDSLLLLQSTQNVTVNAR NSEGEVTGRLKVGPKMVEVQNQQF QINSNDGKPLFTVDEKEVVVGTDKLRVTGPE GALFEHSVETPLVRADPFQDLRLESPTRSLSMDAPRGVH IQAHAGKIEALSQMDILF HSSDGMLVLDAETVCLPKLVQGTWGPSGSSQSLYEICVCPDGKLYLSVAGVS TTC QESHICL TRTRPLEQKLISEEDLAANDILDYKDDDDKV

 Tel: 1-631-559-9269 1-516-512-3133

 Email: info@creative-biomart.com  Fax: 1-631-938-8127

 45-1 Ramsey Road, Shirley, NY 11967, USA

Purity	> 80% as determined by SDS-PAGE and Coomassie blue staining.
Stability	Stable for 12 months from the date of receipt of the product under proper storage and handling conditions. Avoid repeated freeze-thaw cycles.
Storage	Store at -80 centigrade.
Concentration	>50 ug/mL as determined by microplate BCA method.
Preparation	Recombinant protein was captured through anti-DDK affinity column followed by conventional chromatography steps.
Protein Families	Druggable Genome, Transmembrane
Protein Pathways	Arrhythmogenic right ventricular cardiomyopathy (ARVC), Dilated cardiomyopathy, Hypertrophic cardiomyopathy (HCM), Viral myocarditis
Full Length	Full L.

GENE INFORMATION

Gene Name	SGCG sarcoglycan gamma [Homo sapiens (human)]
Official Symbol	SGCG
Synonyms	A4; MAM; DMDA; SCG3; 35DAG; DAGA4; DMDA1; LGMD2C; LGMDR5; SCARMD2; gamma-SG
Gene ID	6445
mRNA Refseq	NM_000231.3

 Tel: 1-631-559-9269 1-516-512-3133

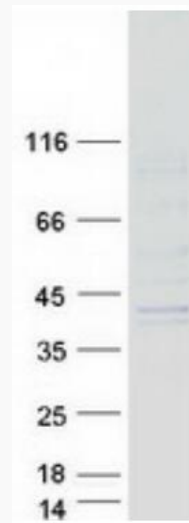
 Email: info@creative-biomart.com  Fax: 1-631-938-8127

 45-1 Ramsey Road, Shirley, NY 11967, USA

Protein Refseq NP_000222.2

MIM 608896

UniProt ID Q13326



Coomassie blue staining of purified SGCG protein.

 Tel: 1-631-559-9269 1-516-512-3133

 Email: info@creative-biomart.com  Fax: 1-631-938-8127

 45-1 Ramsey Road, Shirley, NY 11967, USA