

## Recombinant Human SGCG Protein, MYC/DDK-tagged, C13 and N15-labeled

Cat. No. SGCG-359H Lot. No. (See product label)

### SPECIFICATION

#### Product Overview

SGCG MS Standard C13 and N15-labeled recombinant protein (NP\_000222) with a C-terminal MYC/DDK tag, was expressed in HEK293 cells.

#### Species

Human

#### Source

HEK293

#### Description

This gene encodes gamma-sarcoglycan, one of several sarcolemmal transmembrane glycoproteins that interact with dystrophin. The dystrophin-glycoprotein complex (DGC) spans the sarcolemma and is comprised of dystrophin, syntrophin, alpha- and beta-dystroglycans and sarcoglycans. The DGC provides a structural link between the subsarcolemmal cytoskeleton and the extracellular matrix of muscle cells. Defects in the encoded protein can lead to early onset autosomal recessive muscular dystrophy, in particular limb-girdle muscular dystrophy, type 2C (LGMD2C). [provided by RefSeq, Oct 2008]

#### Molecular Mass

32.4 kDa

#### AA Sequence

MVREQYTTATEGICIERPENQYVYKIGIYGWRKRCLYLFVLLLLLILVVNLALTIWILKV  
 MWFSPAGMGHLCVTKDGLRLEGESEFLPLYAKEIHSRVDSSLLLQSTQNVTVNAR  
 NSEGEVTGRLKVGPKMVEVQNQQFQINSNDGKPLFTVDEKEVVVGTDKLRVTGPE  
 GALFEHSVETPLVRADPFQDLRLESPTRSLSMDAPRGVHIQAHAGKIEALSQMDILF  
 HSSDGMLVLD AETVCLPKLVQGTWGPSGSSQSLYEICVCPDGKLYLSVAGVSTTCQ

 Tel: 1-631-559-9269 1-516-512-3133

 Email: [info@creative-biomart.com](mailto:info@creative-biomart.com)  Fax: 1-631-938-8127

 45-1 Ramsey Road, Shirley, NY 11967, USA

ESHSHICLTRTRPLEQKLISEEDLAANDILDYKDDDDKV

**Purity** > 80% as determined by SDS-PAGE and Coomassie blue staining

**Stability** Stable for 3 months from receipt of products under proper storage and handling conditions.

**Storage** Store at -80 centigrade. Avoid repeated freeze-thaw cycles.

**Concentration** 50 µg/mL as determined by BCA

**Storage Buffer** 100 mM glycine, 25 mM Tris-HCl, pH 7.3.

## GENE INFORMATION

**Gene Name** [SGCG sarcoglycan, gamma \(35kDa dystrophin-associated glycoprotein\) \[ Homo sapiens \(human\) \]](#)

**Official Symbol** [SGCG](#)

**Synonyms** SGCG; sarcoglycan, gamma (35kDa dystrophin-associated glycoprotein); DMDA1, LGMD2C, MAM, sarcoglycan, gamma (35kD dystrophin associated glycoprotein); gamma-sarcoglycan; 35kD dystrophin associated glycoprotein; A4; DAGA4; DMDA; gamma sarcoglycan; limb girdle muscular dystrophy 2C (Duchenne like muscular dystrophy; autosomal recessive); Maghrebian myopathy (autosomal recessive); MGC130048; SCARMD2; SCG3; TYPE; 35DAG; gamma-SG; 35kD dystrophin-associated glycoprotein; 35 kDa dystrophin-associated glycoprotein; MAM; DMDA1; LGMD2C;

**Gene ID** [6445](#)

 Tel: 1-631-559-9269 1-516-512-3133

 Email: [info@creative-biomart.com](mailto:info@creative-biomart.com)  Fax: 1-631-938-8127

 45-1 Ramsey Road, Shirley, NY 11967, USA

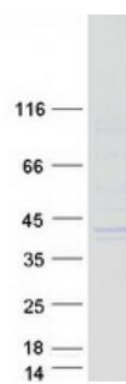
mRNA Refseq [NM\\_000231](#)

Protein Refseq [NP\\_000222](#)

MIM [608896](#)

UniProt ID [Q13326](#)

#### SDS-PAGE



 Tel: 1-631-559-9269 1-516-512-3133

 Email: [info@creative-biomart.com](mailto:info@creative-biomart.com)  Fax: 1-631-938-8127

 45-1 Ramsey Road, Shirley, NY 11967, USA