

## Recombinant Human SGMS2 Protein, GST-tagged

Cat. No. SGMS2-4336H Lot. No. (See product label)

### SPECIFICATION

<b>Product Overview</b>	Human MGC26963 full-length ORF ( NP_689834.1, 1 a.a. - 365 a.a.) recombinant protein with GST-tag at N-terminal.
<b>Species</b>	Human
<b>Source</b>	Wheat Germ
<b>Description</b>	<p>Spingomyelin, a major component of cell and Golgi membranes, is made by the transfer of phosphocholine from phosphatidylcholine onto ceramide, with diacylglycerol as a side product. The protein encoded by this gene is an enzyme that catalyzes this reaction primarily at the cell membrane. The synthesis is reversible, and this enzyme can catalyze the reaction in either direction. The encoded protein is required for cell growth. Three transcript variants encoding the same protein have been found for this gene. There is evidence for more variants, but the full-length nature of their transcripts has not been determined</p>
<b>Molecular Mass</b>	68.7 kDa
<b>AA Sequence</b>	<p>MDIETAKLEEHLNQPSDPTNTYARPAEPVEEENKNGNGPKSLSSGLRKGTKKYP  DYIQIAMPTESRNKFPLEWWKTGIAFIYAVFNLVLTVMITVVHERVPPKELSPPLPK  FFDYIDRVKWFVSEINGIILVGLWITQWFLFRYKSIVGRRFCFIIGTLYLYRCITMYV  TTLPVPGMHFQCAPKLNQDSQAKVQRILRLISGGGLSITGSHILCGDFLFSGHTVTLT  LTYLFIKEYSPRHFVWYHLICWLLSAAGIICILVAHEHYTIDVIIAYYITRFLFWWYHSM  ANEKNLKVSSQTNFLSRAWWFPIFYFFEKNVQGSIPCCFSWPLSWPPGCFKSSCKK</p>

 Tel: 1-631-559-9269 1-516-512-3133

 Email: [info@creative-biomart.com](mailto:info@creative-biomart.com)  Fax: 1-631-938-8127

 45-1 Ramsey Road, Shirley, NY 11967, USA

YSRVQKIGEDNEKST

**Applications**

Enzyme-linked Immunoabsorbent Assay  
 Western Blot (Recombinant protein)  
 Antibody Production  
 Protein Array

**Notes**

Best use within three months from the date of receipt of this protein.

**Storage**

Store at -80 centigrade. Aliquot to avoid repeated freezing and thawing.

**Storage Buffer**

50 mM Tris-HCl, 10 mM reduced Glutathione, pH=8.0 in the elution buffer.

**GENE INFORMATION**

**Gene Name**

[SGMS2 sphingomyelin synthase 2 \[ Homo sapiens \]](#)

**Official Symbol**

[SGMS2](#)

**Synonyms**

SGMS2; sphingomyelin synthase 2; phosphatidylcholine:ceramide  
 cholinephosphotransferase 2; MGC26963; SMS2; SM synthase;

**Gene ID**

[166929](#)

**mRNA Refseq**

[NM\\_001136257](#)

**Protein Refseq**

[NP\\_001129729](#)

**MIM**

[611574](#)

**UniProt ID**

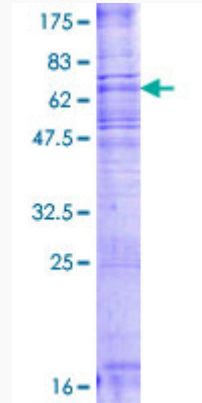
[Q8NHU3](#)

 Tel: 1-631-559-9269 1-516-512-3133

 Email: [info@creative-biomart.com](mailto:info@creative-biomart.com)  Fax: 1-631-938-8127

 45-1 Ramsey Road, Shirley, NY 11967, USA

**Quality Control  
Testing**



12.5% SDS-PAGE Stained with Coomassie Blue

 Tel: 1-631-559-9269 1-516-512-3133

 Email: [info@creative-biomart.com](mailto:info@creative-biomart.com)  Fax: 1-631-938-8127

 45-1 Ramsey Road, Shirley, NY 11967, USA