

Recombinant Human SGPL1 protein, His-tagged

Cat. No. SGPL1-1297H Lot. No. (See product label)

SPECIFICATION

Product Overview	Recombinant Human SGPL1 aa. (Gln239~Arg493 fused with N-terminal His tag was produced in E. coli cells.
Species	Human
Source	E.coli
ProteinLength	Gln239~Arg493
Form	Freeze-dried powder
Molecular Mass	28kDa as determined by SDS-PAGE reducing conditions.
Endotoxin	<1.0EU per 1g (determined by the LAL method)
Purity	>95%
Characteristic	The isoelectric point is 9.4.
Applications	SDS-PAGE; WB; ELISA; IP; CoIP; Purification; Amine Reactive Labeling.
Stability	The thermal stability is described by the loss rate. The loss rate was determined by accelerated thermal degradation test, that is, incubate the protein at 37°C for 48h, and no obvious degradation and precipitation were observed. The loss rate is less than 5% within the expiration date under appropriate storage condition.

 Tel: 1-631-559-9269 1-516-512-3133

 Email: info@creative-biomart.com  Fax: 1-631-938-8127

 45-1 Ramsey Road, Shirley, NY 11967, USA

Storage	Avoid repeated freeze/thaw cycles. Store at 2-8°C for one month. Aliquot and store at -80°C for 12 months.
Concentration	200µg/mL
Storage buffer	100mM NaHCO ₃ , 500mM NaCl, pH8.3, containing 1mM EDTA, 1mM DTT, 0.01% sarcosyl, 5% Trehalose and Proclin300.
Reconstitution	Reconstitute in 100mM NaHCO ₃ , 500mM NaCl (pH8.3) to a concentration of 0.1-1.0 mg/mL. Do not vortex.

GENE INFORMATION

Gene Name	SGPL1 sphingosine-1-phosphate lyase 1 [Homo sapiens (human)]
Official Symbol	SGPL1
Synonyms	SGPL1; sphingosine-1-phosphate lyase 1; SPL; S1PL; NPHS14; sphingosine-1-phosphate lyase 1; SP-lyase 1; SPL 1; hSPL; sphingosine-1-phosphate aldolase
Gene ID	8879
mRNA Refseq	NM_003901.3
Protein Refseq	NP_003892.2
UniProt ID	O95470

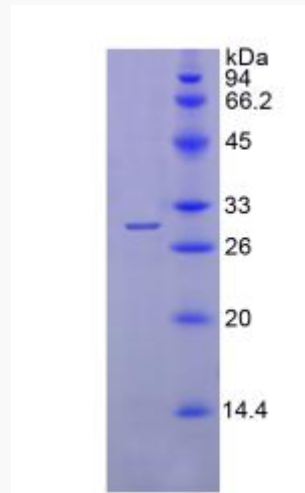
 Tel: 1-631-559-9269 1-516-512-3133

 Email: info@creative-biomart.com  Fax: 1-631-938-8127

 45-1 Ramsey Road, Shirley, NY 11967, USA



SDS-PAGE



Tel: 1-631-559-9269 1-516-512-3133

Email: info@creative-biomart.com Fax: 1-631-938-8127

45-1 Ramsey Road, Shirley, NY 11967, USA