

Recombinant Human SGPL1 Protein, Myc/DDK-tagged, C13 and N15-labeled

Cat. No. SGPL1-3141H Lot. No. (See product label)

SPECIFICATION

| | |
|-------------------------|---|
| Product Overview | SGPL1 MS Standard C13 and N15-labeled recombinant protein (NP_003892) with a C-terminal MYC/DDK tag, was expressed in HEK293 cells. |
| Species | Human |
| Source | HEK293 |
| Description | Cleaves phosphorylated sphingoid bases (PSBs), such as sphingosine-1-phosphate, into fatty aldehydes and phosphoethanolamine. Elevates stress-induced ceramide production and apoptosis. Required for global lipid homeostasis in liver and cholesterol homeostasis in fibroblasts. Involved in the regulation of pro-inflammatory response and neutrophil trafficking. Modulates neuronal autophagy via phosphoethanolamine production which regulates accumulation of aggregate-prone proteins such as APP. Seems to play a role in establishing neuronal contact sites and axonal maintenance. |
| Molecular Mass | 63.3 kDa |
| AA Sequence | MPSTDLLMLKAFEPYLEILEVYSTKAKNYVNGHCTKYEPWQLIAWSVVWTLIVWGY EFVFQPESLWSRFKKKCFKLTRKMPIIGRKIQDKLNKTKDDISKNMSFLKVDKEYVKA LPSQGLSSSAVLEKLKEYSSMDAFWQEGRASGTVYSGEEKLTELLVKAYGDFAWS NPLHPDIFPGLRKIEAEIVRIACSLFNGGPDSCGCVTSGGTESILMACKAYRDLAFEK GIKTPEIVAPQSAHAAFNKAASYFGMKIVRVPLTKMMEVDVRAMRRAISRNTAMLVC |

 Tel: 1-631-559-9269 1-516-512-3133

 Email: info@creative-biomart.com  Fax: 1-631-938-8127

 45-1 Ramsey Road, Shirley, NY 11967, USA

STPQFPHGVIDPVPEVAKLAVKYKIPLHVDAACLGGLIVFMEKAGYPLEHPDFRVKG
 VTSISADTHKYGYAPKGGSSLVLYSDKKYRNYQFFVDTDWQGGIYASPTIAGSRPGGI
 SAACWAALMHFGGENGYVEATKQIIKTARFLKSELENIKGIFVFGNPQLSVIALGSRDF
 DIYRLSNLMTAKGWNLNQLQFPPSIHFCITLLHARKRVAIQFLKDIRESVTQIMKNPKA
 KTTGMGAIYGMAQTTVDRNMVAELSSVFLDSLSTDTVTQGSQMNGSPKPHTRTR
 PLEQKLISEEDLAANDILDYKDDDDKV

Purity > 80% as determined by SDS-PAGE and Coomassie blue staining

Stability Stable for 3 months from receipt of products under proper storage and handling conditions.

Storage Store at -80 centigrade. Avoid repeated freeze-thaw cycles.

Concentration 50 µg/mL as determined by BCA

Storage Buffer 100 mM glycine, 25 mM Tris-HCl, pH 7.3.

GENE INFORMATION

Gene Name [SGPL1 sphingosine-1-phosphate lyase 1 \[Homo sapiens \(human\) \]](#)

Official Symbol [SGPL1](#)

Synonyms SGPL1; sphingosine-1-phosphate lyase 1; SPL; hSPL; SPL 1; SP-lyase 1; sphingosine-1-phosphate aldolase; S1PL; FLJ13811; KIAA1252;

Gene ID [8879](#)

mRNA Refseq [NM_003901](#)

 Tel: 1-631-559-9269 1-516-512-3133

 Email: info@creative-biomart.com  Fax: 1-631-938-8127

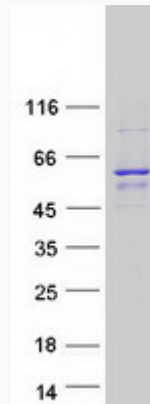
 45-1 Ramsey Road, Shirley, NY 11967, USA

Protein Refseq NP_003892

MIM 603729

UniProt ID O95470

SDS-PAGE



 Tel: 1-631-559-9269 1-516-512-3133

 Email: info@creative-biomart.com  Fax: 1-631-938-8127

 45-1 Ramsey Road, Shirley, NY 11967, USA