

Recombinant Full Length Human SGPL1 Protein, C-Flag-tagged

Cat. No. SGPL1-711HFL **Lot. No.** (See product label)

SPECIFICATION

Product Overview	Recombinant Full Length Human SGPL1 Protein, fused to Flag-tag at C-terminus, was expressed in Mammalian cells.
Species	Human
Source	Mammalian Cells
Description	Enables sphinganine-1-phosphate aldolase activity. Involved in apoptotic signaling pathway; fatty acid metabolic process; and sphingolipid metabolic process. Located in endoplasmic reticulum. Implicated in nephrotic syndrome type 14.
Form	25 mM Tris HCl, pH 7.3, 100 mM glycine, 10% glycerol.
Molecular Mass	63.3 kDa
AA Sequence	<p>MPSTDLLMLKAFEPYLEILEVYSTKAKNYVNGHCTKYEPWQLIAWSVVWTLIVWGY EFVFQPESLWSRF KKKCFKLTRKMPIIGRKIQDKLNKTKDDISKNMSFLKVDKEYVK ALPSQGLSSSAVLEKLKEYSSMDAFW QEGRASGTVYSGEEKLTELLVKAYGDFAW SNPLHPDIFPGLRKIEAEIVRIACSLFNGGPDSCGCVTSSG TESILMACKAYRDLAFE KGIKTPEIVAPQSAHAFAFNKAASYFGMKIVRVPLTKMMEVDVRAMRRAISRNT AMLV CSTPQFPHGVIDPVPEVAKLAVKYKIPLHVDACLGGFLIVFMEKAGYPLEHPDFRVK GVTSISAD THKYGYAPKGSSLVLYSDKKYRNYQFFVDTDWQGGIYASPTIAGSRPG GISAACWAALMHFGENGYVEAT KQIIKTARFLKSELENIKGIFVFGNPQLSVIALGSR DFDIYRLSNLMTAKGWNLNLQLQFPPSIHFCITLL HARKRVAIQFLKDIRESVTQIMKN</p>

 Tel: 1-631-559-9269 1-516-512-3133

 Email: info@creative-biomart.com  Fax: 1-631-938-8127

 45-1 Ramsey Road, Shirley, NY 11967, USA

PKAKTTGMGAIYGMAQTTVDRNMVAELSSVFLDSLSTDTVTQGSQ
MNGSPKPHTRTRPLEQKLISEEDLAANDILDYKDDDDKV

Purity	> 80% as determined by SDS-PAGE and Coomassie blue staining.
Stability	Stable for 12 months from the date of receipt of the product under proper storage and handling conditions. Avoid repeated freeze-thaw cycles.
Storage	Store at -80 centigrade.
Concentration	>50 ug/mL as determined by microplate BCA method.
Preparation	Recombinant protein was captured through anti-DDK affinity column followed by conventional chromatography steps.
Protein Families	Druggable Genome
Protein Pathways	Metabolic pathways, Sphingolipid metabolism
Full Length	Full L.

GENE INFORMATION

Gene Name	SGPL1 sphingosine-1-phosphate lyase 1 [Homo sapiens (human)]
Official Symbol	SGPL1
Synonyms	SPL; S1PL; NPHS14
Gene ID	8879

 Tel: 1-631-559-9269 1-516-512-3133

 Email: info@creative-biomart.com  Fax: 1-631-938-8127

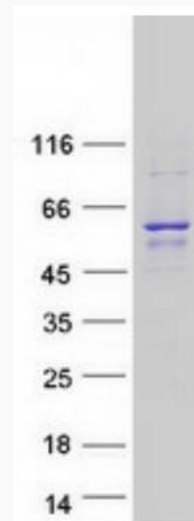
 45-1 Ramsey Road, Shirley, NY 11967, USA

mRNA Refseq [NM_003901.4](#)

Protein Refseq [NP_003892.2](#)

MIM [603729](#)

UniProt ID [O95470](#)



Coomassie blue staining of purified SGPL1 protein.

 Tel: 1-631-559-9269 1-516-512-3133

 Email: info@creative-biomart.com  Fax: 1-631-938-8127

 45-1 Ramsey Road, Shirley, NY 11967, USA