

Recombinant Human SGSH Protein (Arg21-Leu502), C-His tagged

Cat. No. SGSH-6275H Lot. No. (See product label)

SPECIFICATION

Product Overview	Recombinant human SGSH (Arg21-Leu502) fused with the C-terminal His tag was expressed in mammalian cells.
Species	Human
Source	Mammalian Cells
ProteinLength	Arg21-Leu502
Form	Lyophilized powder/frozen liquid
Molecular Mass	53.02 kDa
Purity	> 90 % as determined by SDS-PAGE
Notes	For research use only.
Storage	Use a manual defrost freezer and avoid repeated freeze thaw cycles. Store at 2 to 8 centigrade for one week. Store at -20 to -80 centigrade for twelve months from the date of receipt.
Storage Buffer	Supplied as solution form in PBS or lyophilized from PBS.
Reconstitution	Reconstitute in sterile water for a stock solution.

 Tel: 1-631-559-9269 1-516-512-3133

 Email: info@creative-biomart.com  Fax: 1-631-938-8127

 45-1 Ramsey Road, Shirley, NY 11967, USA

Shipping They are shipped out with dry ice/blue ice unless customers require otherwise.

GENE INFORMATION

Gene Name	SGSH N-sulfoglucosamine sulfohydrolase [Homo sapiens (human)]
Official Symbol	SGSH
Synonyms	SGSH; N-sulfoglucosamine sulfohydrolase; N-sulphoglucosamine sulphohydrolase; HSS; MPS3A; mucopolysaccharidosis type IIIA; SFMD; sulfamidase; sulphamidase; heparan sulfate sulfatase; sulfoglucosamine sulfamidase;
Gene ID	6448
mRNA Refseq	NM_000199
Protein Refseq	NP_000190
MIM	605270
UniProt ID	P51688

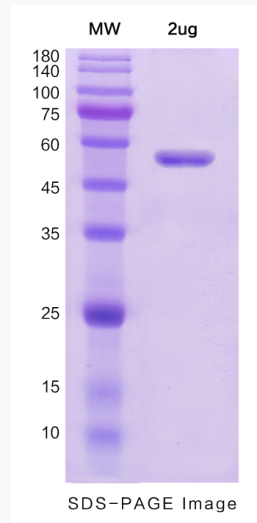
 Tel: 1-631-559-9269 1-516-512-3133

 Email: info@creative-biomart.com  Fax: 1-631-938-8127

 45-1 Ramsey Road, Shirley, NY 11967, USA



SDS-PAGE



Tel: 1-631-559-9269 1-516-512-3133

Email: info@creative-biomart.com Fax: 1-631-938-8127

45-1 Ramsey Road, Shirley, NY 11967, USA