

Recombinant Full Length Human SGSH Protein, C-Flag-tagged

Cat. No. SGSH-965HFL Lot. No. (See product label)

SPECIFICATION

Product Overview	Recombinant Full Length Human SGSH Protein, fused to Flag-tag at C-terminus, was expressed in Mammalian cells.
Species	Human
Source	Mammalian Cells
Description	This gene encodes the enzyme sulfamidase; one of several enzymes involved in the lysosomal degradation of heparan sulfate. Mutations in this gene are associated with the lysosomal storage disease mucopolysaccharidosis IIIA, also known as Sanfilippo syndrome A, which results from impaired degradation of heparan sulfate. Transcripts of varying sizes have been reported but their biological validity has not been determined.
Form	25 mM Tris HCl, pH 7.3, 100 mM glycine, 10% glycerol.
Molecular Mass	54.6 kDa
AA Sequence	MSCPVPACCALLLVLGLCRARPRNALLLLADDGGFESGAYNNSAIATPHLDALARRS LLFRNAFTSVSSC SPSRASLLTGLPQHQNGLYGLHGDVHHFNSFDKVRSLPLLLSQ AGVRTGIIGKKHVGPEVYPPDFAYTE ENGSVLQVGRNITRIKLLVRKFLQTQDDRP FFLYVAFHDPHRCGHSQPQYGTFCFKFNGESGMGRIPDW TPQAYDPLDVLVPYF VPNTPAARADLAAQYTTVGRMDQGVGLVLQELRDAGVLNDTLVIFTSDNGIPFPS G RTNLYWPGTAEPLLVSPEHPKRWGQVSEAYVSLDLTPTILDWFSIPYPSYAIFGSK TIHLTGRSLLP ALEAEPLWATVFGSQSHHEVTMSYPMRSVQHRHFRVLVHNLNFKMP

 Tel: 1-631-559-9269 1-516-512-3133

 Email: info@creative-biomart.com  Fax: 1-631-938-8127

 45-1 Ramsey Road, Shirley, NY 11967, USA

FPIDQDFYVSPTFQDLLNRTTAGQP TGWYKDLRHYYYRARWELYDRSRDPHETQN
 LATDPRFAQLLEMLRDQLAKWQWETHDPWVCAPDGVLEEK
 LSPQCQPLHNELTRTRPLEQKLISEEDLAANDILDYKDDDDKV

Purity > 80% as determined by SDS-PAGE and Coomassie blue staining.

Stability Stable for 12 months from the date of receipt of the product under proper storage and handling conditions. Avoid repeated freeze-thaw cycles.

Storage Store at -80 centigrade.

Concentration >50 ug/mL as determined by microplate BCA method.

Preparation Recombinant protein was captured through anti-DDK affinity column followed by conventional chromatography steps.

Protein Families Druggable Genome

Protein Pathways Glycosaminoglycan degradation, Lysosome, Metabolic pathways

Full Length Full L.

GENE INFORMATION

Gene Name [SGSH N-sulfoglucosamine sulfohydrolase \[Homo sapiens \(human\) \]](#)

Official Symbol [SGSH](#)

Synonyms HSS; SFMD; MPS3A

Gene ID [6448](#)

 Tel: 1-631-559-9269 1-516-512-3133

 Email: info@creative-biomart.com  Fax: 1-631-938-8127

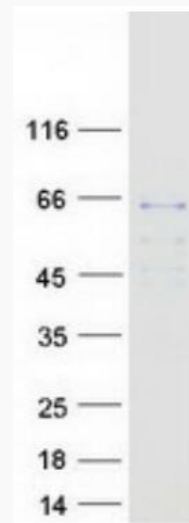
 45-1 Ramsey Road, Shirley, NY 11967, USA

mRNA Refseq [NM_000199.5](#)

Protein Refseq [NP_000190.1](#)

MIM [605270](#)

UniProt ID [P51688](#)



Coomassie blue staining of purified SGSH protein.

 Tel: 1-631-559-9269 1-516-512-3133

 Email: info@creative-biomart.com  Fax: 1-631-938-8127

 45-1 Ramsey Road, Shirley, NY 11967, USA