

# Recombinant Human SGTB Protein, Myc/DDK-tagged, C13 and N15-labeled

**Cat. No.** SGTB-3496H    **Lot. No.** (See product label)

## SPECIFICATION

<b>Product Overview</b>	SGTB MS Standard C13 and N15-labeled recombinant protein (NP_061945) with a C-terminal MYC/DDK tag, was expressed in HEK293 cells.
<b>Species</b>	Human
<b>Source</b>	HEK293
<b>Description</b>	Co-chaperone that binds directly to HSC70 and HSP70 and regulates their ATPase activity.
<b>Molecular Mass</b>	33.4 kDa
<b>AA Sequence</b>	MSSIKHLVYAVIRFLREQSQMDTYTSDEQESLEVAIQCLETVFKISPEDTHLAVSQPL TEMFTSSFCKNDVLP LSNVSPEDVGKADQLKDEGNNHMKEENYAAAVDCYTQAIEL DPNNVYYCNRAAAQSKLGHYTD AIKDCEKAI AIDSKYSKAYGRMGLALTALNKFEE AVTSYQKALDLDPENDSYKSNLKIAEQKLRVSSPTGTGLSFDMASLINNPAFISMAA SLMQNPQVQQLMSGMMTNAIGGPAAGVGGGLTDLSSLIQAGQQFAQQIQQQNPELIE QLRNHIRSRSFSSSAEEHSTRTRPLEQKLISEEDLAANDILDYKDDDDKV
<b>Purity</b>	> 80% as determined by SDS-PAGE and Coomassie blue staining
<b>Stability</b>	Stable for 3 months from receipt of products under proper storage and handling conditions.

 Tel: 1-631-559-9269    1-516-512-3133

 Email: [info@creative-biomart.com](mailto:info@creative-biomart.com)     Fax: 1-631-938-8127

 45-1 Ramsey Road, Shirley, NY 11967, USA

<b>Storage</b>	Store at -80 centigrade. Avoid repeated freeze-thaw cycles.
<b>Concentration</b>	50 µg/mL as determined by BCA
<b>Storage Buffer</b>	100 mM glycine, 25 mM Tris-HCl, pH 7.3.
<b>GENE INFORMATION</b>	
<b>Gene Name</b>	SGTB small glutamine rich tetratricopeptide repeat containing beta [ Homo sapiens (human) ]
<b>Official Symbol</b>	SGTB
<b>Synonyms</b>	SGTB; small glutamine rich tetratricopeptide repeat containing beta; SGT2; small glutamine-rich tetratricopeptide repeat-containing protein beta; beta-SGT; small glutamine rich protein with tetratricopeptide repeats 2; small glutamine-rich tetratricopeptide repeat (TPR)-containing, beta
<b>Gene ID</b>	54557
<b>mRNA Refseq</b>	NM_019072
<b>Protein Refseq</b>	NP_061945
<b>UniProt ID</b>	Q96EQ0

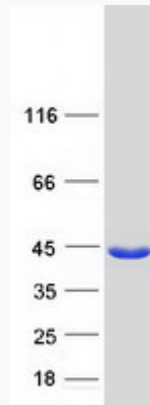
 Tel: 1-631-559-9269 1-516-512-3133

 Email: [info@creative-biomart.com](mailto:info@creative-biomart.com)  Fax: 1-631-938-8127

 45-1 Ramsey Road, Shirley, NY 11967, USA



SDS-PAGE



Tel: 1-631-559-9269 1-516-512-3133

Email: [info@creative-biomart.com](mailto:info@creative-biomart.com) Fax: 1-631-938-8127

45-1 Ramsey Road, Shirley, NY 11967, USA