

Recombinant Human SH2B3 Mutant (R262W) Protein, Myc/DDK-tagged

Cat. No. SH2B3-051H Lot. No. (See product label)

SPECIFICATION

Product Overview

Purified mutant recombinant protein of Human SH2B adaptor protein 3 (SH2B3), mutation at (R262W) with a Myc/DDK tag was expressed in HEK293

Species

Human

Source

HEK293

Description

This gene encodes a member of the SH2B adaptor family of proteins, which are involved in a range of signaling activities by growth factor and cytokine receptors. The encoded protein is a key negative regulator of cytokine signaling and plays a critical role in hematopoiesis. Mutations in this gene have been associated with susceptibility to celiac disease type 13 and susceptibility to insulin-dependent diabetes mellitus. Alternatively spliced transcript variants encoding different isoforms have been found for this gene.

Molecular Mass

63 kDa

Purity

> 80% as determined by SDS-PAGE and Coomassie blue staining

Stability

Stable for at least 12 months from receipt of products under proper storage and handling conditions. Avoid repeated freeze-thaw cycles.

Storage

Store at -80 centigrade after receiving vials.

 Tel: 1-631-559-9269 1-516-512-3133

 Email: info@creative-biomart.com  Fax: 1-631-938-8127

 45-1 Ramsey Road, Shirley, NY 11967, USA

Concentration > 50 µg/mL as determined by microplate Bradford method

Storage Buffer 25 mM Tris.HCl, pH 7.3, 100 mM glycine, 10% glycerol

GENE INFORMATION

Gene Name SH2B3 SH2B adaptor protein 3 [Homo sapiens (human)]

Official Symbol SH2B3

Synonyms SH2B3; SH2B adaptor protein 3; LNK; IDDM20; SH2B adapter protein 3; lymphocyte-specific adapter protein Lnk; signal transduction protein Lnk; truncated SH2B3

Gene ID 10019

mRNA Refseq NM_005475

Protein Refseq NP_005466

MIM 605093

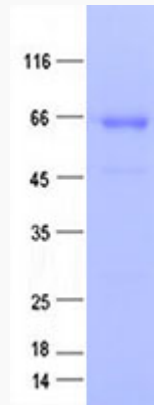
UniProt ID Q9UQQ2

 Tel: 1-631-559-9269 1-516-512-3133

 Email: info@creative-biomart.com  Fax: 1-631-938-8127

 45-1 Ramsey Road, Shirley, NY 11967, USA

SDS-PAGE



Purified recombinant protein SH2B3 (R262W) was analyzed by SDS-PAGE gel and Coomassie Blue Staining.

 Tel: 1-631-559-9269 1-516-512-3133

 Email: info@creative-biomart.com  Fax: 1-631-938-8127

 45-1 Ramsey Road, Shirley, NY 11967, USA