

Recombinant Human SH2D1A protein, GST-tagged

Cat. No. SH2D1A-2639H Lot. No. (See product label)

SPECIFICATION

| | |
|-------------------------|--|
| Product Overview | Recombinant Human SH2D1A protein(1-128 aa), fused with N-terminal GST tag, was expressed in E. coli. |
| Species | Human |
| Source | E.coli |
| ProteinLength | 1-128 aa |
| Form | The purified protein was Lyophilized from sterile PBS (58mM Na ₂ HPO ₄ , 17mM NaH ₂ PO ₄ , 68mM NaCl, pH7.4). 5 % trehalose and 5 % mannitol are added as protectant before lyophilization. |
| Storage | Short-term storage: Store at 2-8°C for (1-2 weeks). Long-term storage: Aliquot and store at -20°C to -80°C for up to 3 months, reconstitution with sterile water and addition of an equal volume of glycerol. Avoid repeat freeze-thaw cycles. |
| AA Sequence | MDAVAVYHGKISRETGEKLLLATGLDGSYLLRDSSEVPGVYCLCVLYHGYIYTYRVS QTETGSSWSAETAPGVHKRYFRKIKNLISAFQKPDQGIVIPLQYPVEKKSSARSTQGT TGIREDPDVCLKAP |
| Purity | 85%, by SDS-PAGE with Coomassie Brilliant Blue staining. |

GENE INFORMATION

 Tel: 1-631-559-9269 1-516-512-3133

 Email: info@creative-biomart.com  Fax: 1-631-938-8127

 45-1 Ramsey Road, Shirley, NY 11967, USA

| | |
|------------------------|--|
| Official Symbol | SH2D1A |
| Synonyms | SH2D1A; SH2 domain containing 1A; IMD5, lymphoproliferative syndrome , LYP, SH2 domain protein 1A; SH2 domain-containing protein 1A; DSHP; Duncans disease; EBVS; MTCP1; SAP; XLP; XLPD; SLAM-associated protein; Duncan disease SH2-protein; T cell signal transduction molecule SAP; T-cell signal transduction molecule SAP; SLAM associated protein/SH2 domain protein 1A; signaling lymphocyte activation molecule-associated protein; signaling lymphocytic activation molecule-associated protein; LYP; IMD5; SAP/SH2D1A; FLJ18687; FLJ92177; |
| Gene ID | 4068 |
| mRNA Refseq | NM_001114937 |
| Protein Refseq | NP_001108409 |
| MIM | 300490 |
| UniProt ID | O60880 |

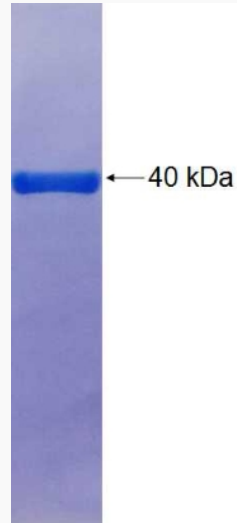
 Tel: 1-631-559-9269 1-516-512-3133

 Email: info@creative-biomart.com  Fax: 1-631-938-8127

 45-1 Ramsey Road, Shirley, NY 11967, USA



SDS-PAGE



Tel: 1-631-559-9269 1-516-512-3133

Email: info@creative-biomart.com Fax: 1-631-938-8127

45-1 Ramsey Road, Shirley, NY 11967, USA