

Recombinant Human SH2D1A Protein, Myc/DDK-tagged, C13 and N15-labeled

Cat. No. SH2D1A-3239H **Lot. No.** (See product label)

SPECIFICATION

Product Overview	SH2D1A MS Standard C13 and N15-labeled recombinant protein (NP_002342) with a C-terminal MYC/DDK tag, was expressed in HEK293 cells.
Species	Human
Source	HEK293
Description	<p>This gene encodes a protein that plays a major role in the bidirectional stimulation of T and B cells. This protein contains an SH2 domain and a short tail. It associates with the signaling lymphocyte-activation molecule, thereby acting as an inhibitor of this transmembrane protein by blocking the recruitment of the SH2-domain-containing signal-transduction molecule SHP-2 to its docking site. This protein can also bind to other related surface molecules that are expressed on activated T, B and NK cells, thereby modifying signal transduction pathways in these cells. Mutations in this gene cause lymphoproliferative syndrome X-linked type 1 or Duncan disease, a rare immunodeficiency characterized by extreme susceptibility to infection with Epstein-Barr virus, with symptoms including severe mononucleosis and malignant lymphoma. Multiple transcript variants encoding different isoforms have been found for this gene.</p>
Molecular Mass	14.2 kDa
AA Sequence	MDAVAVYHGKISRETGEKLLLATGLDGSYLLRDSSEVPGVYCLCVLYHGYIYTYRVS QTETGSWSAETAPGVHKRYFRKIKNLISAFQKPDQGIVIPVLPVEKKSSARSTQGT

 Tel: 1-631-559-9269 1-516-512-3133

 Email: info@creative-biomart.com  Fax: 1-631-938-8127

 45-1 Ramsey Road, Shirley, NY 11967, USA

TGIREDPDVCLKAPTRTRPLEQKLISEEDLAANDILDYKDDDDKV

Purity > 80% as determined by SDS-PAGE and Coomassie blue staining

Stability Stable for 3 months from receipt of products under proper storage and handling conditions.

Storage Store at -80 centigrade. Avoid repeated freeze-thaw cycles.

Concentration 50 µg/mL as determined by BCA

Storage Buffer 100 mM glycine, 25 mM Tris-HCl, pH 7.3.

GENE INFORMATION

Gene Name SH2D1A SH2 domain containing 1A [Homo sapiens (human)]

Official Symbol SH2D1A

Synonyms SH2D1A; SH2 domain containing 1A; IMD5, lymphoproliferative syndrome, LYP, SH2 domain protein 1A; SH2 domain-containing protein 1A; DSHP; Duncans disease; EBVS; MTCP1; SAP; XLP; XLPD; SLAM-associated protein; Duncan disease SH2-protein; T cell signal transduction molecule SAP; T-cell signal transduction molecule SAP; SLAM associated protein/SH2 domain protein 1A; signaling lymphocyte activation molecule-associated protein; signaling lymphocytic activation molecule-associated protein; LYP; IMD5; SAP/SH2D1A; FLJ18687; FLJ92177;

Gene ID 4068

mRNA Refseq NM_002351

 Tel: 1-631-559-9269 1-516-512-3133

 Email: info@creative-biomart.com  Fax: 1-631-938-8127

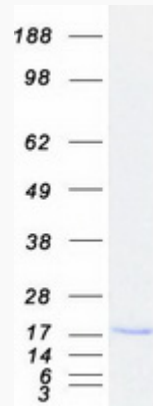
 45-1 Ramsey Road, Shirley, NY 11967, USA

Protein Refseq NP_002342

MIM 300490

UniProt ID O60880

SDS-PAGE



 Tel: 1-631-559-9269 1-516-512-3133

 Email: info@creative-biomart.com  Fax: 1-631-938-8127

 45-1 Ramsey Road, Shirley, NY 11967, USA