

Recombinant Human SH2D1A Protein (Met1-Pro128), N-His tagged

Cat. No. SH2D1A-5863H Lot. No. (See product label)

SPECIFICATION

Product Overview	Recombinant human SH2D1A (Met1-Pro128) fused with the N-terminal His tag was expressed in E. coli.
Species	Human
Source	E.coli
ProteinLength	Met1-Pro128
Form	Lyophilized powder/frozen liquid
Molecular Mass	14.08 kDa
Purity	> 90 % as determined by SDS-PAGE
Notes	For research use only.
Storage	Use a manual defrost freezer and avoid repeated freeze thaw cycles. Store at 2 to 8 centigrade for one week. Store at -20 to -80 centigrade for twelve months from the date of receipt.
Storage Buffer	Supplied as solution form in PBS or lyophilized from PBS.
Reconstitution	Reconstitute in sterile water for a stock solution.

 Tel: 1-631-559-9269 1-516-512-3133

 Email: info@creative-biomart.com  Fax: 1-631-938-8127

 45-1 Ramsey Road, Shirley, NY 11967, USA

Shipping They are shipped out with dry ice/blue ice unless customers require otherwise.

GENE INFORMATION

Gene Name SH2D1A SH2 domain containing 1A [Homo sapiens (human)]

Official Symbol SH2D1A

Synonyms SH2D1A; SH2 domain containing 1A; IMD5, lymphoproliferative syndrome, LYP, SH2 domain protein 1A; SH2 domain-containing protein 1A; DSHP; Duncans disease; EBVS; MTCP1; SAP; XLP; XLPD; SLAM-associated protein; Duncan disease SH2-protein; T cell signal transduction molecule SAP; T-cell signal transduction molecule SAP; SLAM associated protein/SH2 domain protein 1A; signaling lymphocyte activation molecule-associated protein; signaling lymphocytic activation molecule-associated protein; LYP; IMD5; SAP/SH2D1A; FLJ18687; FLJ92177;

Gene ID 4068

mRNA Refseq NM_001114937

Protein Refseq NP_001108409

MIM 300490

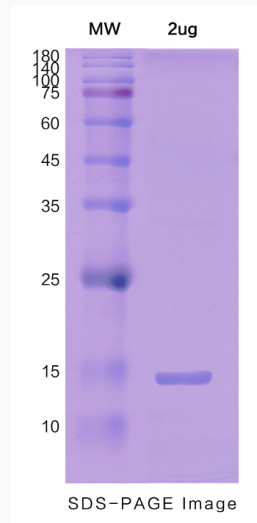
UniProt ID O60880

 Tel: 1-631-559-9269 1-516-512-3133

 Email: info@creative-biomart.com  Fax: 1-631-938-8127

 45-1 Ramsey Road, Shirley, NY 11967, USA

SDS-PAGE



 Tel: 1-631-559-9269 1-516-512-3133

 Email: info@creative-biomart.com  Fax: 1-631-938-8127

 45-1 Ramsey Road, Shirley, NY 11967, USA