

Recombinant Human SH2D1B Protein, His-tagged

Cat. No. SH2D1B-210H Lot. No. (See product label)

SPECIFICATION

Product Overview	Recombinant Human SH2D1B(1-132aa) fused with His tag at C-terminal was expressed in Insect cells.
Species	Human
Source	Insect Cells
ProteinLength	1-132aa
Description	SH2D1B, also known as SH2 domain-containing protein 1B, is one of the proteins which activate NK cells. It plays a role in controlling signal transduction through at least four receptors, CD84, SLAMF1, LY9 and CD244, expressed on the surface of professional antigen-presenting cells. Two isoforms of the human protein are produced by alternative splicing.
Form	Liquid. In Phosphate Buffered Saline (pH 7.4) containing 20% glycerol.
Molecular Mass	16.4kDa (141aa) 18-28KDa (SDS-PAGE under reducing conditions.)
AA Sequence	ADPMDLPYYH GRLTKQDCET LLLKEGVDGN FLLRDSESIP GVLCLCVSFK NIVYTYRIFR EKHGYYRIQT AEGSPKQVFP SLKELISKFE KPNQGMVVHL LKPIKRTSPS LRWRGLKLEL ETFVNSNSDY VDVLPHHHHH H
Purity	> 90% by SDS - PAGE

 Tel: 1-631-559-9269 1-516-512-3133

 Email: info@creative-biomart.com  Fax: 1-631-938-8127

 45-1 Ramsey Road, Shirley, NY 11967, USA

Applications	SDS-PAGE
Storage	Can be stored at +4 centigrade short term (1-2 weeks). For long term storage, aliquot and store at -20 centigrade or -70 centigrade. Avoid repeated freezing and thawing cycles.
Concentration	0.25mg/ml (determined by Absorbance at 280nm)

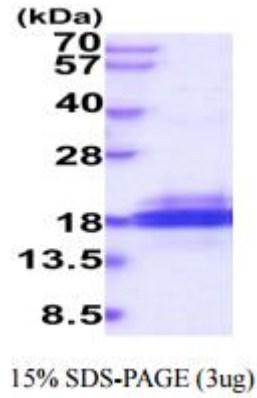
GENE INFORMATION


Gene Name	SH2D1B SH2 domain containing 1B [Homo sapiens]
Official Symbol	SH2D1B
Synonyms	SH2D1B; SH2 domain containing 1B; SH2 domain-containing protein 1B; EAT2; EAT-2; EWS/FLI1-activated transcript 2; SH2 domain-containing molecule EAT2;
Gene ID	117157
mRNA Refseq	NM_053282
Protein Refseq	NP_444512
MIM	608510
UniProt ID	O14796

 Tel: 1-631-559-9269 1-516-512-3133


 Email: info@creative-biomart.com  Fax: 1-631-938-8127

 45-1 Ramsey Road, Shirley, NY 11967, USA



 Tel: 1-631-559-9269 1-516-512-3133

 Email: info@creative-biomart.com  Fax: 1-631-938-8127

 45-1 Ramsey Road, Shirley, NY 11967, USA