

Recombinant Full Length Human SH2D1B Protein, C-Flag-tagged

Cat. No. SH2D1B-2183HFL **Lot. No.** (See product label)

SPECIFICATION

Product Overview	Recombinant Full Length Human SH2D1B Protein, fused to Flag-tag at C-terminus, was expressed in Mammalian cells.
Species	Human
Source	Mammalian Cells
Description	By binding phosphotyrosines through its free SRC (MIM 190090) homology-2 (SH2) domain, EAT2 regulates signal transduction through receptors expressed on the surface of antigen-presenting cells.
Form	25 mM Tris HCl, pH 7.3, 100 mM glycine, 10% glycerol.
Molecular Mass	15.1 kDa
AA Sequence	MDLPYYHGRLTKQDCETLLLKEGVDGNFLLRDSESI PGVLCVLFKNI VYTYRIFRE KHGYYRIQTAEG SPKQVFP SLKELISKFEKPNQGMVVHLLKPIKRTSPSLRWRGLKL ELET FVN SNSDYVDVLP TRTRPLEQKLISEEDLAANDILDYKDDDDKV
Purity	> 80% as determined by SDS-PAGE and Coomassie blue staining.
Stability	Stable for 12 months from the date of receipt of the product under proper storage and handling conditions. Avoid repeated freeze-thaw cycles.

 Tel: 1-631-559-9269 1-516-512-3133

 Email: info@creative-biomart.com  Fax: 1-631-938-8127

 45-1 Ramsey Road, Shirley, NY 11967, USA

Storage	Store at -80 centigrade.
Concentration	>50 ug/mL as determined by microplate BCA method.
Preparation	Recombinant protein was captured through anti-DDK affinity column followed by conventional chromatography steps.
Protein Pathways	Natural killer cell mediated cytotoxicity
Full Length	Full L.

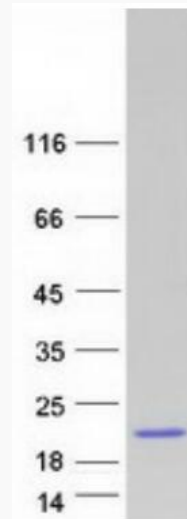
GENE INFORMATION

Gene Name	SH2D1B SH2 domain containing 1B [Homo sapiens (human)]
Official Symbol	SH2D1B
Synonyms	EAT2
Gene ID	117157
mRNA Refseq	NM_053282.5
Protein Refseq	NP_444512.2
MIM	608510
UniProt ID	O14796

 Tel: 1-631-559-9269 1-516-512-3133

 Email: info@creative-biomart.com  Fax: 1-631-938-8127

 45-1 Ramsey Road, Shirley, NY 11967, USA



Coomassie blue staining of purified SH2D1B protein.

Tel: 1-631-559-9269 1-516-512-3133

Email: info@creative-biomart.com Fax: 1-631-938-8127

45-1 Ramsey Road, Shirley, NY 11967, USA