

Recombinant Human SHANK2 protein, His-tagged

Cat. No. SHANK2-25H Lot. No. (See product label)

SPECIFICATION

| | |
|-------------------------|--|
| Product Overview | Active Recombinant Mouse IL22 Protein(Q9JJY9)(Leu34-Val179) is expressed from HEK293 with His tag at the N-terminus. |
| Species | Mouse |
| Source | HEK293 |
| ProteinLength | Leu34-Val179 |
| Tag | N-His |
| Form | Lyophilized from 0.22 µm filtered solution in PBS (pH 7.4). Normally 8% trehalose is added as protectant before lyophilization. |
| Bio-activity | Immobilized Mouse IL-22, His Tag at 2µg/ml (100µl/well) on the plate. Dose response curve for Mouse IL-22R alpha 1, hFc Tag with the EC50 of 6.7ng/ml determined by ELISA. |
| Molecular Mass | The protein has a predicted MW of 17.73 kDa. Due to glycosylation, the protein migrates to 30-45 kDa based on Tris-Bis PAGE result. |
| Endotoxin | Less than 1EU per µg by the LAL method. |
| Purity | > 95% as determined by Tris-Bis PAGE > 95% as determined by HPLC |

 Tel: 1-631-559-9269 1-516-512-3133

 Email: info@creative-biomart.com  Fax: 1-631-938-8127

 45-1 Ramsey Road, Shirley, NY 11967, USA



Storage

Store at -20 to -80°C for 12 months as supplied from date of receipt; -80°C for 3-6 months after reconstitution; 2-8°C for 2-7 days after reconstitution; Recommend to aliquot the protein into smaller quantities for optimal storage. Please minimize freeze-thaw cycles.

Reconstitution

Centrifuge the tube before opening. Reconstituting to a concentration more than 100 µg/ml is recommended. Dissolve the lyophilized protein in distilled water.

GENE INFORMATION

Gene Name

IL22 interleukin 22 [*Mus musculus*]

Official Symbol

IL22

Synonyms

IL22; interleukin 22; interleukin-22; ILTIF alpha; IL-TIF alpha; interleukin-22a; IL-10-related T-cell-derived-inducible factor; interleukin 10-related T cell-derived inducible factor; IL-22; Iltif; IL-22a; ILTIFa; MGC129416; MGC129417;

Gene ID

50929

mRNA Refseq

NM_016971

Protein Refseq

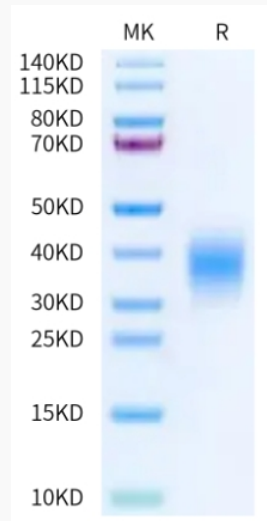
NP_058667

Tel: 1-631-559-9269 1-516-512-3133

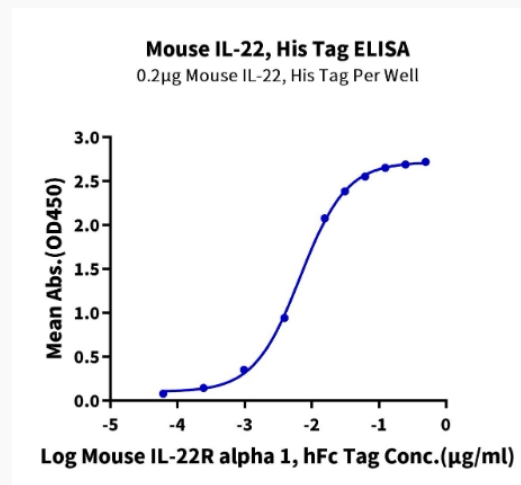
Email: info@creative-biomart.com Fax: 1-631-938-8127


45-1 Ramsey Road, Shirley, NY 11967, USA

Tris-Bis PAGE



ELISA Data



 Tel: 1-631-559-9269 1-516-512-3133

 Email: info@creative-biomart.com  Fax: 1-631-938-8127

 45-1 Ramsey Road, Shirley, NY 11967, USA