

Active Recombinant Human SHH Protein (Gly25-Gly197, C24II), Animal-free, Carrier-free

Cat. No. SHH-275H Lot. No. (See product label)

SPECIFICATION

Product Overview	Recombinant Human SHH Protein (Gly25-Gly197, C24II) without tag was expressed in HEK293 and Animal-free as well as Carrier-free.
Species	Human
Source	HEK293
ProteinLength	Gly25-Gly197
Description	Sonic hedgehog protein (SHH) plays a critical role in development of embryonic morphogenesis which mediate the process of organogenesis and central nervous system. The sonic hedgehog signal pathway also plays an important role in cancerous tumors like embryonic cerebellar tumor, prostate cancer tumours and medulloblastoma. Shh binds the receptor (Ptc1) that induce the smo protein to activate the downstream pathway, which induce the shh target gene expression.
Form	Lyophilized
Bio-activity	Measured by its ability to induce alkaline phosphatase production by C3H/10T1/2 mouse embryonic fibroblast cells. The ED50 for this effect is 0.5-2 µg/mL.
Molecular Mass	The protein has a calculated MW of 19.67 kDa. The protein migrates as 15-25 kDa under reducing condition (SDS-PAGE analysis).

 Tel: 1-631-559-9269 1-516-512-3133

 Email: info@creative-biomart.com  Fax: 1-631-938-8127

 45-1 Ramsey Road, Shirley, NY 11967, USA

Endotoxin	< 0.1 EU/μg of the protein by the LAL method.
Purity	>95% as determined by SDS-PAGE analysis.
Storage	This product is stable after storage at: -20 centigrade for 12 months in lyophilized state from date of receipt. -20 or -80 centigrade for 1 month under sterile conditions after reconstitution. Avoid repeated freeze/thaw cycles.
Storage Buffer	Lyophilized from a 0.2 μm filtered solution of PBS, pH 7.4.
Reconstitution	It is recommended to reconstitute the lyophilized protein in sterile H ₂ O to a concentration not less than 200 μg/mL and incubate the stock solution for at least 20 min to ensure sufficient re-dissolved.
Shipping	The product is shipped with polar packs. Upon receipt, store it immediately at -20 centigrade or lower for long term storage.

GENE INFORMATION

Gene Name	SHH sonic hedgehog [<i>Homo sapiens</i> (human)]
Official Symbol	SHH
Synonyms	SHH; sonic hedgehog; HLP3, HPE3, sonic hedgehog (<i>Drosophila</i>) homolog , sonic hedgehog homolog (<i>Drosophila</i>); sonic hedgehog protein; HHG1; MCOPCB5; SMMCI; TPT; TPTPS; sonic hedgehog homolog; HLP3; HPE3;
Gene ID	6469
mRNA Refseq	NM_000193

 Tel: 1-631-559-9269 1-516-512-3133

 Email: info@creative-biomart.com  Fax: 1-631-938-8127

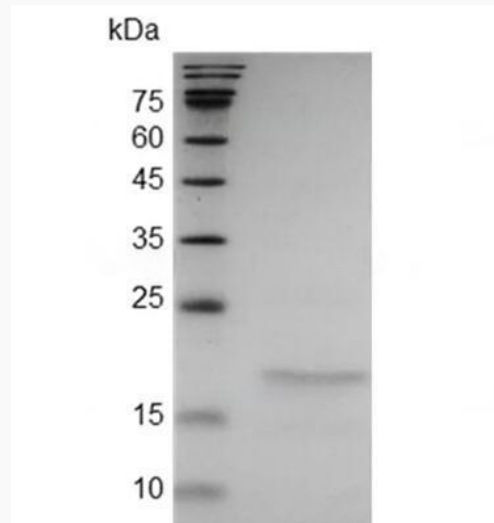
 45-1 Ramsey Road, Shirley, NY 11967, USA

Protein Refseq NP_000184

MIM 600725

UniProt ID Q15465

**SDS-PAGE analysis
of Human Sonic
Hedgehog (C24II).**



 Tel: 1-631-559-9269 1-516-512-3133

 Email: info@creative-biomart.com  Fax: 1-631-938-8127

 45-1 Ramsey Road, Shirley, NY 11967, USA