

## Recombinant Human SHH Protein

Cat. No. SHH-36H Lot. No. (See product label)

### SPECIFICATION

**Product Overview**

Recombinant human Shh protein without tag was expressed in E. coli.  
 Animal-free (AOF) and carrier protein-free.  
 Mass spectrometry: single species with expected mass.  
 Recovery from stock vial: >95%

**Species** Human

**Source** E.coli

**Description**

This gene encodes a protein that is instrumental in patterning the early embryo. It has been implicated as the key inductive signal in patterning of the ventral neural tube, the anterior-posterior limb axis, and the ventral somites. Of three human proteins showing sequence and functional similarity to the sonic hedgehog protein of Drosophila, this protein is the most similar. The protein is made as a precursor that is autocatalytically cleaved; the N-terminal portion is soluble and contains the signalling activity while the C-terminal portion is involved in precursor processing. More importantly, the C-terminal product covalently attaches a cholesterol moiety to the N-terminal product, restricting the N-terminal product to the cell surface and preventing it from freely diffusing throughout the developing embryo. Defects in this protein or in its signalling pathway are a cause of holoprosencephaly (HPE), a disorder in which the developing forebrain fails to correctly separate into right and left hemispheres. HPE is manifested by facial deformities. It is also thought that mutations in this gene or in its signalling pathway may be responsible for VACTERL syndrome, which is characterized by vertebral defects, anal atresia, tracheoesophageal fistula with

 Tel: 1-631-559-9269 1-516-512-3133

 Email: [info@creative-biomart.com](mailto:info@creative-biomart.com)  Fax: 1-631-938-8127

 45-1 Ramsey Road, Shirley, NY 11967, USA

esophageal atresia, radial and renal dysplasia, cardiac anomalies, and limb abnormalities. Additionally, mutations in a long range enhancer located approximately 1 megabase upstream of this gene disrupt limb patterning and can result in preaxial polydactyly.

<b>Molecular Mass</b>	19.8 kDa (monomer)
<b>Endotoxin</b>	<0.005 EU/μg protein (below level of detection)
<b>Applications</b>	Pancreatic tumor organoid culture; maintenance of urine-derived Stem cells
<b>Storage</b>	Resuspend in water at >100 μg/mL, prepare single use aliquots, add carrier protein if desired and store frozen at -20 centigrade (short-term) or -80 centigrade (long-term).
<b>Storage Buffer</b>	Lyophilized from PBS

## GENE INFORMATION

<b>Gene Name</b>	SHH sonic hedgehog signaling molecule [ Homo sapiens (human) ]
<b>Official Symbol</b>	SHH
<b>Synonyms</b>	SHH; sonic hedgehog signaling molecule; TPT; HHG1; HLP3; HPE3; SMMCI; ShhNC; TPTPS; MCOPCB5; sonic hedgehog protein; shh unprocessed N-terminal signaling and C-terminal autoprocessing domains; sonic hedgehog homolog
<b>Gene ID</b>	6469
<b>mRNA Refseq</b>	NM_000193
<b>Protein Refseq</b>	NP_000184

 Tel: 1-631-559-9269 1-516-512-3133

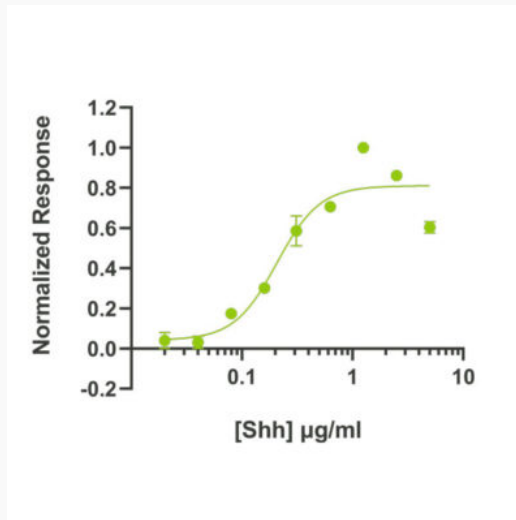
 Email: [info@creative-biomart.com](mailto:info@creative-biomart.com)  Fax: 1-631-938-8127

 45-1 Ramsey Road, Shirley, NY 11967, USA

**MIM** 600725

**UniProt ID** Q15465

**Bioactivity**



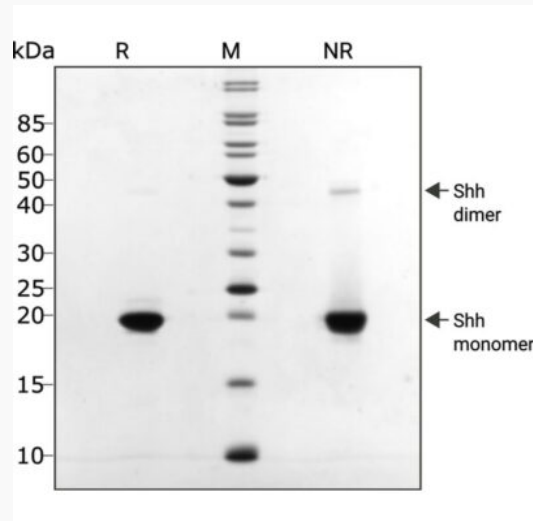
The bioactivity of Shhis determined by its ability to induce alkaline phosphatase production by C3H/10T1/2cells. The EC<sub>50</sub> for this effect is 0.21 µg/mL (10.6 nM). Cells were incubated with different concentrations of Shh for 5 days before alkaline phosphatase measurement.

 Tel: 1-631-559-9269 1-516-512-3133

 Email: [info@creative-biomart.com](mailto:info@creative-biomart.com)  Fax: 1-631-938-8127

 45-1 Ramsey Road, Shirley, NY 11967, USA

**Purity**



Human Shh migrates as a major band at 19.8 kDa in non-reducing conditions. We load 3  $\mu$ g of protein to ensure good visibility of protein in the gel. This allows you to see the faint Shh dimer band at 40 kDa in the non-reduced sample. Shh spontaneously forms non-covalent dimers, this is thought to increase its potency (10). Upon reduction (R), only the 19.8 kDa band is visible. No contaminating protein bands are visible. Purified recombinant protein was resolved using 15% w/v SDS-PAGE in reduced and non-reduced conditions and stained with Coomassie Brilliant Blue R-250.

Tel: 1-631-559-9269 1-516-512-3133

Email: [info@creative-biomart.com](mailto:info@creative-biomart.com) Fax: 1-631-938-8127

45-1 Ramsey Road, Shirley, NY 11967, USA