

Recombinant Human SHOC2 Protein, Myc/DDK-tagged, C13 and N15-labeled

Cat. No. SHOC2-4347H Lot. No. (See product label)

SPECIFICATION

Product Overview

SHOC2 MS Standard C13 and N15-labeled recombinant protein (NP_031399) with a C-terminal MYC/DDK tag, was expressed in HEK293 cells.

Species

Human

Source

HEK293

Description

This gene encodes a protein that consists almost entirely of leucine-rich repeats, a domain implicated in protein-protein interactions. The protein may function as a scaffold linking RAS to downstream signal transducers in the RAS/ERK MAP kinase signaling cascade. Mutations in this gene have been associated with Noonan-like syndrome with loose anagen hair.

Molecular Mass

64.9 kDa

AA Sequence

MSSSLGKEKDSKEKDPKVPSAKEREKEAKASGGFGKESKEKEPKTKGKDAKDGKK
 DSSAAQPGVAFSVDNTIKRPNPAPGTRKKSSNAEVIKELNKREENSMRLDLSKRSI
 HILPSSIKELTQLTELYLYSNKLQSLPAEVGCLVNLMTLALSENSLTSLPDSLNLKLL
 RMLDLRHNKLRIPSVVYRLDSLTTLYLRFNRITVEKDIKNLSKLSMLSIRENKIKQLP
 AEIGELCNLITLDAHNQLEHLPKEIGNCTQITNLDLQHNELLDLPDTIGNLSSLSRLGL
 RYNRLSAIPRSLAKCSALEELNLENNNISTLPESLLSSLVKLNSTLARNCFQLYPVGG
 PSQFSTIYSLNMEHNRINKIPFGIFSRKVLKLNMKDNQLTSLPLDFGTWTSMVLEN
 LATNQLTKIPEDVSGLVSLEVLILSNLLKLP HGLGNLRKLRDLLEENKLES LPNEIA

Tel: 1-631-559-9269 1-516-512-3133

Email: info@creative-biomart.com Fax: 1-631-938-8127

45-1 Ramsey Road, Shirley, NY 11967, USA

YLKDLQKLVLTTNNQLTTLPRGIGHLTNLTHLGLGENLLTHLPEEIGTLENLEELYLNDN
 PNLHSLPFELALCSKLSIMSIENCPLSHLPPQIVAGGSPFIIQFLKMQGPYRAMVTRTR
 PLEQKLISEEDLAANDILDYKDDDDKV

Purity > 80% as determined by SDS-PAGE and Coomassie blue staining

Stability Stable for 3 months from receipt of products under proper storage and handling conditions.

Storage Store at -80 centigrade. Avoid repeated freeze-thaw cycles.

Concentration 50 µg/mL as determined by BCA

Storage Buffer 100 mM glycine, 25 mM Tris-HCl, pH 7.3.

GENE INFORMATION

Gene Name SHOC2 SHOC2 leucine rich repeat scaffold protein [Homo sapiens (human)]

Official Symbol SHOC2

Synonyms SHOC2; SHOC2 leucine rich repeat scaffold protein; SOC2; SUR8; NSLH1; SIAA0862; leucine-rich repeat protein SHOC-2; soc-2 suppressor of clear homolog

Gene ID 8036

mRNA Refseq NM_007373

Protein Refseq NP_031399

MIM 602775

 Tel: 1-631-559-9269 1-516-512-3133

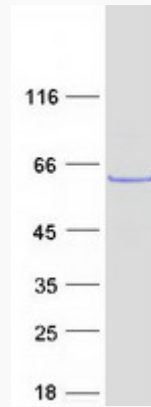
 Email: info@creative-biomart.com  Fax: 1-631-938-8127

 45-1 Ramsey Road, Shirley, NY 11967, USA

UniProt ID

Q9UQ13

SDS-PAGE



 Tel: 1-631-559-9269 1-516-512-3133

 Email: info@creative-biomart.com  Fax: 1-631-938-8127

 45-1 Ramsey Road, Shirley, NY 11967, USA