

Recombinant Human SIGIRR protein, His-tagged

Cat. No. SIGIRR-4659H Lot. No. (See product label)

SPECIFICATION

Product Overview	Recombinant Human SIGIRR protein(Q6IA17)(1-118 aa), fused with N-terminal His tag, was expressed in Yeast.
Species	Human
Source	Yeast
ProteinLength	1-118 aa
Form	For liquid formulations, the standard storage buffer consists of a Tris or PBS based solution supplemented with 5-50% glycerol. When provided as lyophilized powder, the product undergoes freeze-drying from a Tris- or PBS-based formulation containing 6% trehalose, adjusted to pH 8.0 prior to the lyophilization process.
Molecular Mass	14.6 kDa
AASequence	MPGVCDRAPDFLSPSEDQVLRPALGSSVALNCTAWVVSGPHCSLPSVQWLKDGLP LGIGGHYSLHEYSWVKANLSEVLVSSVLGVNVTSTEVYGAFTCSIQNISFSSFTLQRA GPTSH
Purity	Greater than 95% as determined by SDS-PAGE.
Storage	Store at -20°C/-80°C upon receipt, aliquoting is necessary for mutiple use. Avoid repeated freeze-thaw cycles.

 Tel: 1-631-559-9269 1-516-512-3133

 Email: info@creative-biomart.com  Fax: 1-631-938-8127

 45-1 Ramsey Road, Shirley, NY 11967, USA

Reconstitution Please reconstitute protein in deionized sterile water to a concentration of 0.1-1.0 mg/mL. Aliquot for long-term storage at -80°C.

GENE INFORMATION

Gene Name SIGIRR single immunoglobulin and toll-interleukin 1 receptor (TIR) domain [Homo sapiens]

Official Symbol SIGIRR

Synonyms SIGIRR; single immunoglobulin and toll-interleukin 1 receptor (TIR) domain; single Ig IL-1-related receptor; single immunoglobulin domain IL1R1 related; TIR8; toll/interleukin-1 receptor 8; single Ig IL-1R-related molecule; single immunoglobulin domain-containing IL1R-related protein; MGC110992;

Gene ID 59307

mRNA Refseq NM_001135053

Protein Refseq NP_001128525

MIM 605478

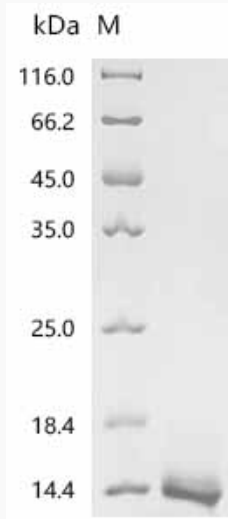
UniProt ID Q6IA17

 Tel: 1-631-559-9269 1-516-512-3133

 Email: info@creative-biomart.com  Fax: 1-631-938-8127

 45-1 Ramsey Road, Shirley, NY 11967, USA

SDS-PAGE



 Tel: 1-631-559-9269 1-516-512-3133

 Email: info@creative-biomart.com  Fax: 1-631-938-8127

 45-1 Ramsey Road, Shirley, NY 11967, USA