

Recombinant Human SIGLEC14 protein, His-tagged

Cat. No. SIGLEC14-1603H Lot. No. (See product label)

SPECIFICATION

| | |
|-------------------------|--|
| Product Overview | Recombinant Human SIGLEC14 protein(Gln24~Leu137), fused with N-terminal His tag, was expressed in E. coli. |
| Species | Human |
| Source | E.coli |
| ProteinLength | Gln24~Leu137 |
| Form | 20mM Tris, 150mM NaCl, pH8.0, containing 0.01% SKL, 5% Trehalose. |
| Molecular Mass | 20kDa |
| Endotoxin | <1.0EU per 1µg (determined by the LAL method). |
| Purity | >97% |
| Storage | Avoid repeated freeze/thaw cycles. Store at 2-8°C for one month. Aliquot and store at -80°C for 12 months. |
| Reconstitution | Reconstitute in 20mM Tris, 150mM NaCl (pH8.0) to a concentration of 0.1-1.0 mg/mL. Do not vortex. |

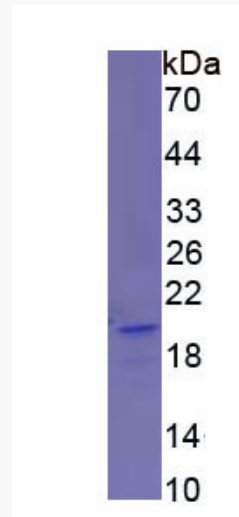
GENE INFORMATION

 Tel: 1-631-559-9269 1-516-512-3133

 Email: info@creative-biomart.com  Fax: 1-631-938-8127

 45-1 Ramsey Road, Shirley, NY 11967, USA

| | |
|------------------------|---|
| Gene Name | SIGLEC14 sialic acid binding Ig like lectin 14 [Homo sapiens (human)] |
| Official Symbol | SIGLEC14 |
| Synonyms | SIGLEC14 |
| Gene ID | 100049587 |
| mRNA Refseq | NM_001098612 |
| Protein Refseq | NP_001092082 |
| MIM | 618132 |
| UniProt ID | Q08ET2 |

SDS-PAGE

 Tel: 1-631-559-9269 1-516-512-3133

 Email: info@creative-biomart.com  Fax: 1-631-938-8127

 45-1 Ramsey Road, Shirley, NY 11967, USA