

Active Recombinant Human SIGLEC15 Protein (ECD), His-tagged

Cat. No. SIGLEC15-01H Lot. No. (See product label)

SPECIFICATION

Product Overview	Recombinant human SIGLEC15 (NP_998767.1) (Met1-Gly260) (extra-cellular domain) with a polyhistidine tag at the C-terminus was expressed in HEK293 Cells.
Species	Human
Source	HEK293
ProteinLength	252
Description	Binds sialylated glycoproteins.
Form	Lyophilized
Bio-activity	Testing in progress
Molecular Mass	27.7 kDa
N-terminal Sequence Analysis	Phe 20
Endotoxin	< 1.0 EU/μg protein as determined by the LAL method.
Purity	> 90 % as determined by SDS-PAGE.

 Tel: 1-631-559-9269 1-516-512-3133

 Email: info@creative-biomart.com  Fax: 1-631-938-8127

 45-1 Ramsey Road, Shirley, NY 11967, USA

Stability	Samples are stable for up to twelve months from date of receipt at -20 to -80 centigrade
Storage	Store it under sterile conditions at -20 to -80 centigrade. It is recommended that the protein be aliquoted for optimal storage. Avoid repeated freeze-thaw cycles.
Storage Buffer	Lyophilized from sterile PBS, 500 mM NaCl, 0.2 % CHAPS, 10 % trehalose, 0.1 M Arg, pH 7.0. Normally 5 % - 8 % trehalose, mannitol and 0.01% Tween80 are added as protectants before lyophilization.

GENE INFORMATION

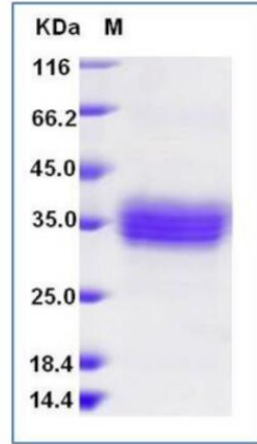
Gene Name	SIGLEC15 sialic acid binding Ig like lectin 15 [Homo sapiens (human)]
Official Symbol	SIGLEC15
Synonyms	SIGLEC15; sialic acid binding Ig like lectin 15; CD33L3; HsT1361; SIGLEC-15; sialic acid-binding Ig-like lectin 15; CD33 antigen-like 3; CD33 molecule-like 3
Gene ID	284266
mRNA Refseq	NM_213602
Protein Refseq	NP_998767
MIM	618105
UniProt ID	Q6ZMC9

 Tel: 1-631-559-9269 1-516-512-3133

 Email: info@creative-biomart.com  Fax: 1-631-938-8127

 45-1 Ramsey Road, Shirley, NY 11967, USA

SDS-PAGE



 Tel: 1-631-559-9269 1-516-512-3133

 Email: info@creative-biomart.com  Fax: 1-631-938-8127

 45-1 Ramsey Road, Shirley, NY 11967, USA