

# Recombinant Cynomolgus SIGLEC15 protein, His-Avi-tagged, Biotinylated

**Cat. No.** SIGLEC15-1625C    **Lot. No.** (See product label)

## SPECIFICATION

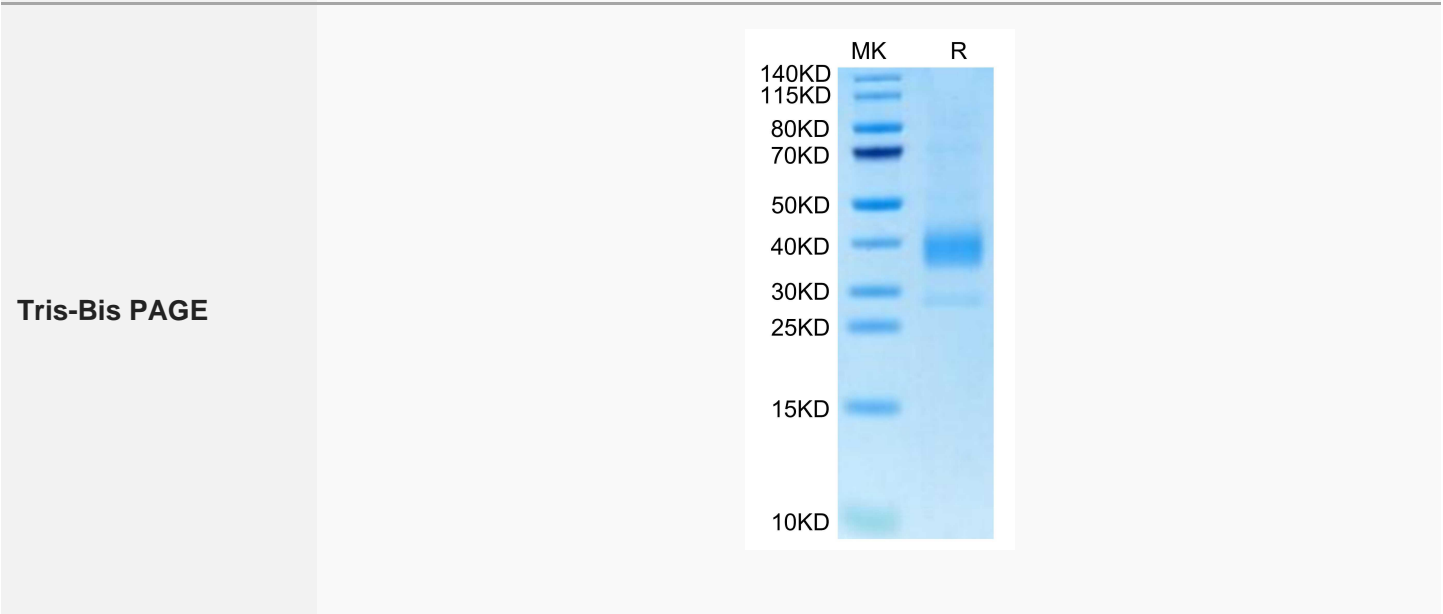
<b>Product Overview</b>	Biotinylated Recombinant Cynomolgus SIGLEC15 protein(XP_005586866.2)(Met60-Thr322), fused with C-terminal His and Avi tag, was expressed in HEK293.
<b>Species</b>	Cynomolgus
<b>Source</b>	HEK293
<b>ProteinLength</b>	Met60-Thr322
<b>Tag</b>	C-His-Avi
<b>Conjugation/Label</b>	Biotin
<b>Form</b>	Supplied as 0.22µm filtered solution in 20mM PB, 500mM NaCl, 0.1M L-Arginine (pH 6.0).
<b>Bio-activity</b>	Immobilized Anti-Siglec-15 Antibody, hFc Tag at 2µg/ml (100µl/well) on the plate. Dose response curve for Biotinylated Cynomolgus Siglec-15, His Tag with the EC50 of 13.2ng/ml determined by ELISA.
<b>Molecular Mass</b>	The protein has a predicted MW of 29.2 kDa. Due to glycosylation, the protein migratesto 33-43 kDa based on Tris-Bis PAGE result.
<b>Endotoxin</b>	Less than 1EU per µg by the LAL method.

 Tel: 1-631-559-9269    1-516-512-3133

 Email: [info@creative-biomart.com](mailto:info@creative-biomart.com)     Fax: 1-631-938-8127

 45-1 Ramsey Road, Shirley, NY 11967, USA

<b>Purity</b>	> 95% as determined by Tris-Bis PAGE; > 95% as determined by HPLC.
<b>Storage</b>	Valid for 12 months from date of receipt when stored at -80°C.; Recommend to aliquot the protein into smaller quantities for optimal storage. Please do not repeated freeze-thaw cycles.
<b>Reconstitution</b>	It is recommended that sterile water be added to the vial to prepare a stock solution of 0.2 ug/ul. Centrifuge the vial at 4°C before opening to recover the entire contents.
<b>Conjugation</b>	Biotin



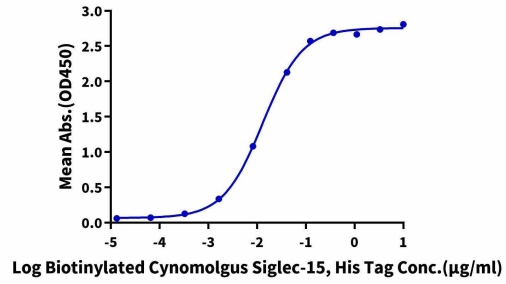
Tel: 1-631-559-9269 1-516-512-3133

Email: [info@creative-biomart.com](mailto:info@creative-biomart.com) Fax: 1-631-938-8127

45-1 Ramsey Road, Shirley, NY 11967, USA

**ELISA**

**Biotinylated Cynomolgus Siglec-15, His Tag ELISA**  
0.2µg Anti-Siglec-15 Antibody, hFc Tag Per Well



 Tel: 1-631-559-9269 1-516-512-3133

 Email: [info@creative-biomart.com](mailto:info@creative-biomart.com)  Fax: 1-631-938-8127

 45-1 Ramsey Road, Shirley, NY 11967, USA