

Recombinant Human SIGLEC15 protein, His-Avi-tagged

Cat. No. SIGLEC15-170H Lot. No. (See product label)

SPECIFICATION

Product Overview	Human Siglec-15 is expressed from HEK293 with a His tag and Avi tag at the C-terminal. It contains Phe20-Thr263.
Species	Human
Source	HEK293
ProteinLength	It contains Phe20-Thr263.
Description	Siglec-15 is a transmembrane glycoprotein in the Siglec family of sialic acid-binding immune regulatory molecules. Mature human Siglec-15 consists of a 244 amino acid extracellular domain (ECD) with two Ig-like domains, a 21 aa transmembrane segment, and a 44 aa cytoplasmic domain. Siglec-15 is a potential therapeutic target for osteoporosis and plays a conserved regulatory role in the immune system of vertebrates..
Form	Supplied as 0.22um filtered solution in 20mM NaAc-HAc(pH 5.0) .
Molecular Mass	The protein has a predicted MW of 29.5 kDa. Due to glycosylation, the protein migrates to 30- 38KDa based on Bis-Tris PAGE result.
Endotoxin	Less than 0.05EU per ug by the LAL method.
Purity	> 95% as determined by SDS-PAGE

 Tel: 1-631-559-9269 1-516-512-3133

 Email: info@creative-biomart.com  Fax: 1-631-938-8127

 45-1 Ramsey Road, Shirley, NY 11967, USA

Storage The product should be stored at -70°C. Please do not repeated freeze-thaw cycles.

Reconstitution It is recommended that sterile water be added to the vial to prepare a stock solution of 0.2 ug/ul. Centrifuge the vial at 4°C before opening to recover the entire contents.

GENE INFORMATION

Gene Name [SIGLEC15 sialic acid binding Ig like lectin 15 \[Homo sapiens \(human\) \]](#)

Official Symbol [SIGLEC15](#)

Synonyms CD33 antigen-like 3 SIGLEC-15; CD33 molecule-like 3; CD33L3; HsT1361; sialic acid binding Ig-like lectin 15; sialic acid-binding Ig-like lectin 15; Siglec15; Siglec-15

Gene ID [284266](#)

mRNA Refseq [NM_213602.3](#)

Protein Refseq [NP_998767.1](#)

MIM [618105](#)

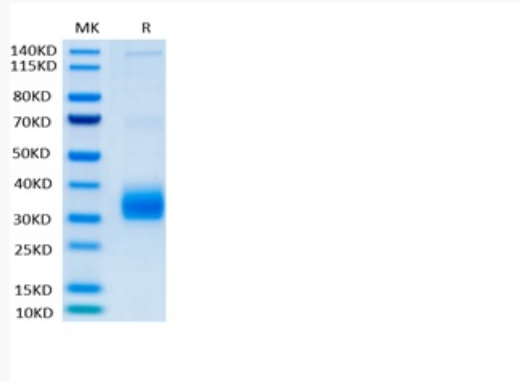
UniProt ID [Q6ZMC9](#)

 Tel: 1-631-559-9269 1-516-512-3133

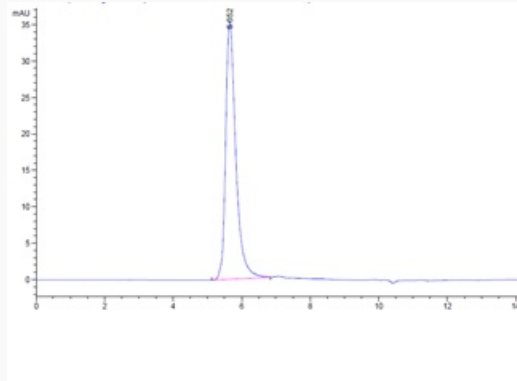
 Email: info@creative-biomart.com  Fax: 1-631-938-8127

 45-1 Ramsey Road, Shirley, NY 11967, USA

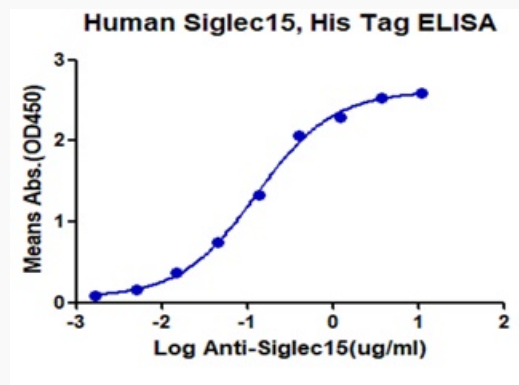
Tris-Bis PAGE



HPLC data



ELISA data



Tel: 1-631-559-9269 1-516-512-3133

Email: info@creative-biomart.com Fax: 1-631-938-8127

45-1 Ramsey Road, Shirley, NY 11967, USA