

Recombinant Cynomolgus SIGLEC15 protein, His-Avi-tagged

Cat. No. SIGLEC15-190C Lot. No. (See product label)

SPECIFICATION

Product Overview	Recombinant Cynomolgus siglec-15 Protein is expressed from mammalian with a Poly-His and Avi Tag at the C-terminal. It contains Phe 20 - Thr 263.
Species	Cynomolgus
Source	HEK293
ProteinLength	It contains Phe 20 - Thr 263 .
Description	Siglec-15 is a transmembrane glycoprotein in the Siglec family of sialic acid-binding immune regulatory molecules. Mature human Siglec-15 consists of a 244 amino acid extracellular domain (ECD) with two Ig-like domains, a 21 aa transmembrane segment, and a 44 aa cytoplasmic domain. Siglec-15 is a potential therapeutic target for osteoporosis and plays a conserved regulatory role in the immune system of vertebrates.
Form	Supplied as 0.22um filtered solution in 20mM PB, 0.5M NaCl, 5% Glycerol,0.1M L-Arginine , pH 6.0.
Molecular Mass	The Protein has a calculated MW of 29.7kDa . As a result of glycosylation, the protein migrates to 35-43kDa based on Bis-Tris PAGE.
Endotoxin	Less than 0.5EU per ug by the LAL method.
Purity	> 95% as determined by Bis-Tris PAGE; > 95% as determined by HPLC

 Tel: 1-631-559-9269 1-516-512-3133

 Email: info@creative-biomart.com  Fax: 1-631-938-8127

 45-1 Ramsey Road, Shirley, NY 11967, USA

Storage The product should be stored at -70°C. Please do not repeated freeze-thaw cycles.

Reconstitution It is recommended that sterile water be added to the vial to prepare a stock solution of 0.2 ug/ul. Centrifuge the vial at 4°C before opening to recover the entire contents.

GENE INFORMATION

Gene Name SIGLEC15 sialic acid binding Ig like lectin 15 [*Macaca fascicularis* (crab-eating macaque)]

Official Symbol SIGLEC15

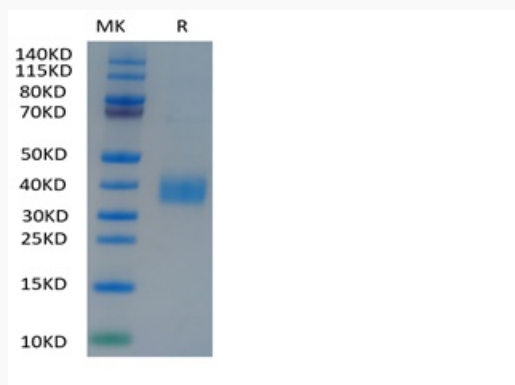
Synonyms CD33 antigen-like 3 SIGLEC-15; CD33 molecule-like 3; CD33L3; HsT1361; sialic acid binding Ig-like lectin 15; sialic acid-binding Ig-like lectin 15; Siglec15; Siglec-15

Gene ID 102126346

mRNA Refseq XM_005586809.2

Protein Refseq XP_005586866.1

Tris-Bis PAGE



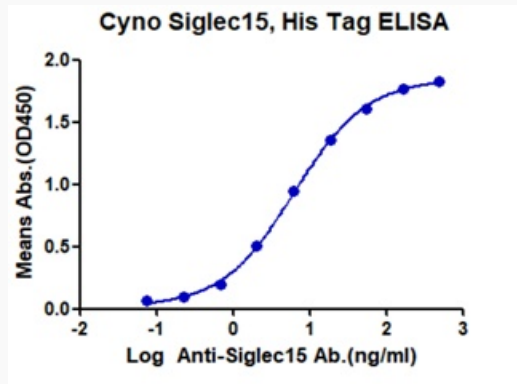
 Tel: 1-631-559-9269 1-516-512-3133

 Email: info@creative-biomart.com  Fax: 1-631-938-8127

 45-1 Ramsey Road, Shirley, NY 11967, USA



ELISA data



Tel: 1-631-559-9269 1-516-512-3133

Email: info@creative-biomart.com Fax: 1-631-938-8127

45-1 Ramsey Road, Shirley, NY 11967, USA