

Recombinant Human SIGLEC15 Protein, His&GST-tagged

Cat. No. SIGLEC15-2057H Lot. No. (See product label)

SPECIFICATION

Product Overview	Recombinant Human SIGLEC15 Protein (Phe20-Leu266) with N-His&GST tag was expressed in E. coli.
Species	Human
Source	E.coli
ProteinLength	Phe20-Leu266
Description	Predicted to be involved in regulation of actin cytoskeleton organization; regulation of bone resorption; and regulation of osteoclast development. Predicted to be integral component of membrane. Predicted to be part of protein-containing complex. Predicted to be active in plasma membrane.
Form	Freeze-dried powder
Molecular Mass	Predicted Molecular Mass: 56.8 kDa Accurate Molecular Mass: 60 kDa
Purity	> 90%
Applications	Positive Control; Immunogen; SDS-PAGE; WB.
Stability	The thermal stability is described by the loss rate. The loss rate was determined by accelerated thermal degradation test, that is, incubate the protein at 37 centigrade for

 Tel: 1-631-559-9269 1-516-512-3133

 Email: info@creative-biomart.com  Fax: 1-631-938-8127

 45-1 Ramsey Road, Shirley, NY 11967, USA

48h, and no obvious degradation and precipitation were observed. The loss rate is less than 5% within the expiration date under appropriate storage condition.

Storage

Avoid repeated freeze/thaw cycles. Store at 2-8 centigrade for one month. Aliquot and store at -80 centigrade for 12 months.

Storage Buffer

20mM Tris, 150mM NaCl, pH8.0, containing 1mM EDTA, 1mM DTT, 0.01% SKL, 5% Trehalose and Proclin300.

Reconstitution

Reconstitute in 20mM Tris, 150mM NaCl (pH8.0) to a concentration of 0.1-1.0 mg/mL. Do not vortex.

GENE INFORMATION

Gene Name

SIGLEC15 sialic acid binding Ig like lectin 15 [Homo sapiens (human)]

Official Symbol

SIGLEC15

Synonyms

SIGLEC15; sialic acid binding Ig like lectin 15; CD33L3; HsT1361; SIGLEC-15; sialic acid-binding Ig-like lectin 15; CD33 antigen-like 3; CD33 molecule-like 3

Gene ID

284266

mRNA Refseq

NM_213602

Protein Refseq

NP_998767

MIM

618105

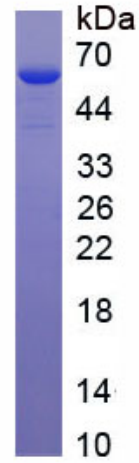
UniProt ID

Q6ZMC9

 Tel: 1-631-559-9269 1-516-512-3133

 Email: info@creative-biomart.com  Fax: 1-631-938-8127

 45-1 Ramsey Road, Shirley, NY 11967, USA



 Tel: 1-631-559-9269 1-516-512-3133

 Email: info@creative-biomart.com  Fax: 1-631-938-8127

 45-1 Ramsey Road, Shirley, NY 11967, USA