

Recombinant Active Human SIGLEC15 Protein (ECD), Fc-His-tagged(C-ter)

Cat. No. SIGLEC15-291H Lot. No. (See product label)

SPECIFICATION

Product Overview	Recombinant Active Human SIGLEC15 Protein (ECD) with Fc-His tag (C-ter) was expressed in HEK293.
Species	Human
Source	HEK293
ProteinLength	Phe20-Thr263
Description	Predicted to be involved in regulation of actin cytoskeleton organization; regulation of bone resorption; and regulation of osteoclast development. Predicted to be integral component of membrane. Predicted to be part of protein-containing complex. Predicted to be active in plasma membrane.
Form	Powder
Bio-activity	Measured by its ability to inhibit Anti-CD3-induced proliferation of Jurkat cells. The ED50 for this effect is 1.8-7.2 µg/mL.
Endotoxin	Endotoxin level is less than 0.1 EU/µg of the protein, as determined by the LAL test.
Purity	> 95% (by SDS-PAGE)
Applications	FuncSt, SDS-PAGE

 Tel: 1-631-559-9269 1-516-512-3133

 Email: info@creative-biomart.com  Fax: 1-631-938-8127

 45-1 Ramsey Road, Shirley, NY 11967, USA

Notes	For laboratory research only, not for drug, diagnostic or other use.
Storage	Lyophilized protein should be stored at -20°C or -80°C. After reconstitution, aliquot and store at -20°C for up to one month, at 2-8°C for up to one week. Storage in frost free freezers is not recommended. Avoid repeated freeze/thaw cycles. Suggest spin the vial prior to opening.
Storage Buffer	PBS (pH 7.4) and 300 mM NaCl.
Reconstitution	Reconstitute to a concentration of 0.1-0.5 mg/ml in sterile distilled water.

GENE INFORMATION

Gene Name	SIGLEC15 sialic acid binding Ig like lectin 15 [Homo sapiens (human)]
Official Symbol	SIGLEC15
Synonyms	SIGLEC15; sialic acid binding Ig like lectin 15; CD33L3; HsT1361; SIGLEC-15; sialic acid-binding Ig-like lectin 15; CD33 antigen-like 3; CD33 molecule-like 3
Gene ID	284266
mRNA Refseq	NM_213602
Protein Refseq	NP_998767
MIM	618105
UniProt ID	Q6ZMC9

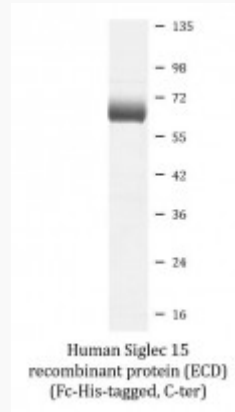
 Tel: 1-631-559-9269 1-516-512-3133

 Email: info@creative-biomart.com  Fax: 1-631-938-8127

 45-1 Ramsey Road, Shirley, NY 11967, USA



SDS-PAGE



Tel: 1-631-559-9269 1-516-512-3133

Email: info@creative-biomart.com Fax: 1-631-938-8127

45-1 Ramsey Road, Shirley, NY 11967, USA