

## Recombinant Human SIGLEC15 protein, hFc-tagged

Cat. No. SIGLEC15-6744H Lot. No. (See product label)

### SPECIFICATION

<b>Product Overview</b>	Recombinant Human SIGLEC15 protein(Q6ZMC9-1)(Lys24-Gly260), fused with C-terminal hFc tag, was expressed in HEK293.
<b>Species</b>	Human
<b>Source</b>	HEK293
<b>ProteinLength</b>	Lys24-Gly260
<b>Tag</b>	C-hFc
<b>Form</b>	Lyophilized from 0.22µm filtered solution in 20mM NaAC (pH 5.0). Normally 5% trehalose is added as protectant before lyophilization.
<b>Bio-activity</b>	Immobilized Human Siglec-15, hFc Tag at 2µg/ml (100µl/well) on the plate. Dose response curve for Biotinylated Anti-Siglec-15 Antibody, hFc Tag with the EC50 of 22.4ng/ml determined by ELISA.
<b>Molecular Mass</b>	The protein has a predicted MW of 52.6 kDa. Due to glycosylation, the protein migrates to 53-60 kDa based on Tris-Bis PAGE result.
<b>Endotoxin</b>	Less than 1EU per µg by the LAL method.
<b>Purity</b>	> 95% as determined by Tris-Bis PAGE

 Tel: 1-631-559-9269 1-516-512-3133

 Email: [info@creative-biomart.com](mailto:info@creative-biomart.com)  Fax: 1-631-938-8127

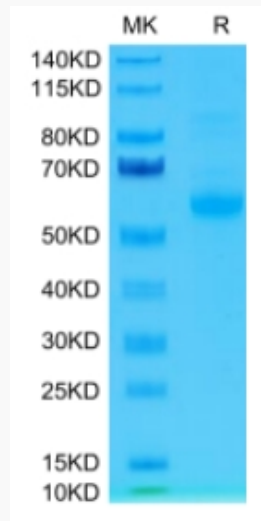
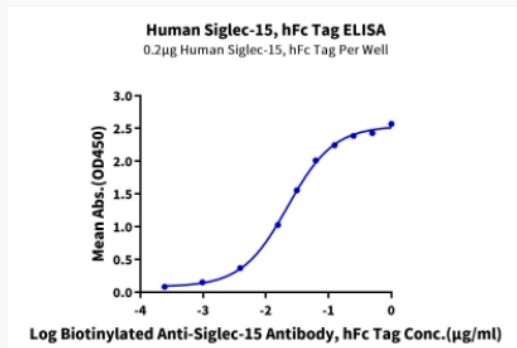
 45-1 Ramsey Road, Shirley, NY 11967, USA

**Storage**

Reconstituted protein stable at -80°C for 12 months, 4°C for 1 week. Use a manual defrost freezer and avoid repeated freeze-thaw cycles.

**Reconstitution**

Centrifuge tubes before opening. Reconstituting to a concentration more than 100 µg/ml is recommended. Dissolve the lyophilized protein in 20mM NaAC (pH 5.0).

**Tris-Bis PAGE**

**ELISA Data**


Tel: 1-631-559-9269 1-516-512-3133

Email: [info@creative-biomart.com](mailto:info@creative-biomart.com) Fax: 1-631-938-8127

45-1 Ramsey Road, Shirley, NY 11967, USA