

## Recombinant Human SIGLEC15 Protein (Phe20-Thr263), C-mFc and 6xHis-tagged

Cat. No. SIGLEC15-727H Lot. No. (See product label)

### SPECIFICATION

<b>Product Overview</b>	Recombinant Human SIGLEC15 Protein (Phe20-Thr263) with C-mFc and 6xHis tag was expressed in HEK293.
<b>Species</b>	Human
<b>Source</b>	HEK293
<b>ProteinLength</b>	Phe20-Thr263
<b>Description</b>	SIGLEC15 (Sialic Acid Binding Ig Like Lectin 15) is a Protein Coding gene. Diseases associated with SIGLEC15 include Osteoporosis, Juvenile and Osteoporosis. Among its related pathways are Innate Immune System and RET signaling. An important paralog of this gene is SIGLEC1.
<b>Form</b>	Lyophilized
<b>Molecular Mass</b>	53.6 kDa
<b>Purity</b>	> 95% as determined by SDS-PAGE and Coomassie blue staining.
<b>Storage</b>	Store at -80 centigrade for 12 months (Avoid repeated freezing and thawing)
<b>Storage Buffer</b>	Lyophilized from sterile PBS, pH 7.4. Normally 5 % - 69 % trehalose is added as protectants before lyophilization.

 Tel: 1-631-559-9269 1-516-512-3133

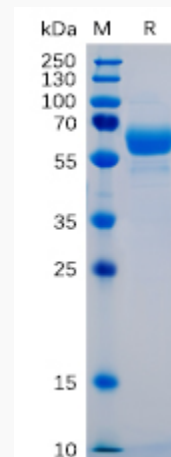
 Email: [info@creative-biomart.com](mailto:info@creative-biomart.com)  Fax: 1-631-938-8127

 45-1 Ramsey Road, Shirley, NY 11967, USA

## GENE INFORMATION

<b>Gene Name</b>	SIGLEC15 sialic acid binding Ig like lectin 15 [ Homo sapiens (human) ]
<b>Official Symbol</b>	SIGLEC15
<b>Synonyms</b>	SIGLEC15; sialic acid binding Ig like lectin 15; CD33L3; HsT1361; SIGLEC-15; sialic acid-binding Ig-like lectin 15; CD33 antigen-like 3; CD33 molecule-like 3
<b>Gene ID</b>	284266
<b>mRNA Refseq</b>	NM_213602
<b>Protein Refseq</b>	NP_998767
<b>MIM</b>	618105
<b>UniProt ID</b>	Q6ZMC9

### SDS-PAGE



Tel: 1-631-559-9269 1-516-512-3133

Email: [info@creative-biomart.com](mailto:info@creative-biomart.com) Fax: 1-631-938-8127

45-1 Ramsey Road, Shirley, NY 11967, USA