

Recombinant Cynomolgus SIGLEC15 protein, His-Avi-tagged

Cat. No. SIGLEC15-9766C Lot. No. (See product label)

SPECIFICATION

Product Overview	Recombinant Cynomolgus SIGLEC15 protein(XP_005586866.2)(Met60-Thr322), fused with C-terminal His and Avi tag, was expressed in HEK293.
Species	Cynomolgus
Source	HEK293
ProteinLength	Met60-Thr322
Tag	C-His-Avi
Form	Supplied as 0.22µm filtered solution in 20mM PB, 500mM NaCl, 0.1M L-arginine (pH 6.0).
Bio-activity	Immobilized Cynomolgus Siglec-15, His Tag at 1µg/ml (100µl/Well) on the plate. Dose response curve for Anti-Siglec-15 Antibody, hFc Tag with the EC50 of 3.8ng/ml determined by ELISA.
Molecular Mass	The protein has a predicted MW of 29.2 kDa. Due to glycosylation, the protein migratesto 33-43 kDa based on Tris-Bis PAGE result.
Endotoxin	Less than 1EU per µg by the LAL method.
Purity	> 95% as determined by Tris-Bis PAGE; > 95% as determined by HPLC

 Tel: 1-631-559-9269 1-516-512-3133

 Email: info@creative-biomart.com  Fax: 1-631-938-8127

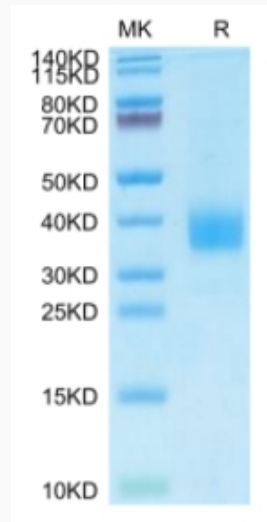
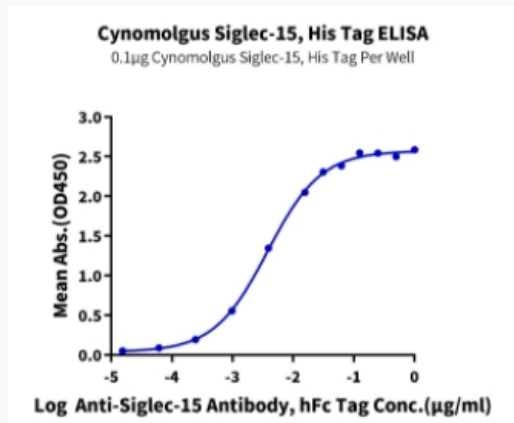
 45-1 Ramsey Road, Shirley, NY 11967, USA

Storage

Valid for 12 months from date of receipt when stored at -80°C; Recommend to aliquot the protein into smaller quantities for optimal storage. Please do not repeated freeze-thaw cycles.

Reconstitution

It is recommended that sterile water be added to the vial to prepare a stock solution of 0.2 ug/ul. Centrifuge the vial at 4°C before opening to recover the entire contents.

Tris-Bis PAGE

ELISA Data


Tel: 1-631-559-9269 1-516-512-3133

Email: info@creative-biomart.com Fax: 1-631-938-8127

45-1 Ramsey Road, Shirley, NY 11967, USA