

Recombinant Human SIGLEC5 Protein, hIgG-His-Tagged

Cat. No. SIGLEC5-01H Lot. No. (See product label)

SPECIFICATION

Product Overview	Recombinant Human SIGLEC5 Protein, hIgG-His-Tagged was expressed in Baculovirus cell line
Species	Human
Source	Insect Cells
ProteinLength	667aa
Description	This gene encodes a member of the sialic acid-binding immunoglobulin-like lectin (Siglec) family. These cell surface lectins are characterized by structural motifs in the immunoglobulin (Ig)-like domains and sialic acid recognition sites in the first Ig V set domain. The encoded protein is a member of the CD33-related subset of Siglecs and inhibits the activation of several cell types including monocytes, macrophages and neutrophils. Binding of group B Streptococcus (GBS) to the encoded protein plays a role in GBS immune evasion.
Form	Liquid
Molecular Mass	74.2 kDa
Endotoxin	< 1 EU per 1ug of protein (determined by LAL method)
Purity	> 90% by SDS-PAGE

 Tel: 1-631-559-9269 1-516-512-3133

 Email: info@creative-biomart.com  Fax: 1-631-938-8127

 45-1 Ramsey Road, Shirley, NY 11967, USA

Applications	SDS-PAGE
Usage	For research use only. This product is not intended or approved for human, diagnostics or veterinary use.
Storage	Can be stored at +2C to +8C for 1 week. For long term storage, aliquot and store at -20°C to -80°C. Avoid repeated freezing and thawing cycles.
Concentration	0.25mg/ml (determined by absorbance at 280nm)
Storage Buffer	Liquid in. Phosphate-Buffered Saline (pH 7.4)

GENE INFORMATION

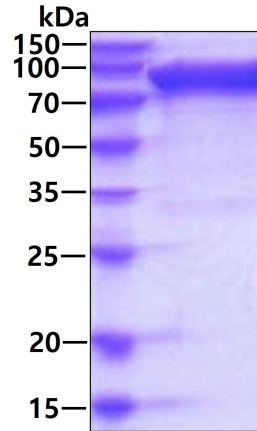
Gene Name	SIGLEC5 sialic acid binding Ig like lectin 5 [Homo sapiens (human)]
Official Symbol	SIGLEC5
Synonyms	Sialic acid-binding Ig-like lectin 5, SIGLEC5, CD170, CD33L2, OB-BP2, OBBP2, SIGLEC-5
Gene ID	8778
mRNA Refseq	NM_003830.4
Protein Refseq	NP_003821.1
MIM	604200
UniProt ID	O15389

 Tel: 1-631-559-9269 1-516-512-3133

 Email: info@creative-biomart.com  Fax: 1-631-938-8127

 45-1 Ramsey Road, Shirley, NY 11967, USA

SDS-PAGE



3ug by SDS-PAGE under reducing condition and visualized by coomassie blue stain.

 Tel: 1-631-559-9269 1-516-512-3133

 Email: info@creative-biomart.com  Fax: 1-631-938-8127

 45-1 Ramsey Road, Shirley, NY 11967, USA