

Recombinant Human SIGLEC5 Protein (Phe458-Lys551), N-His tagged

Cat. No. SIGLEC5-0941H Lot. No. (See product label)

SPECIFICATION

Product Overview	Recombinant Human CD170/SIGLEC5 (Phe458-Lys551) fused with the N-His tag was expressed in E. coli.
Species	Human
Source	E.coli
ProteinLength	Phe458-Lys551
Form	Lyophilized powder/frozen liquid
Molecular Mass	12.80 kDa
Purity	>90% as determined by SDS-PAGE.
Notes	For research use only.
Storage	Use a manual defrost freezer and avoid repeated freeze thaw cycles. Store at 2 to 8 centigrade for one week. Store at -20 to -80 centigrade for twelve months from the date of receipt.
Storage Buffer	0.01M PBS, pH 7.4, 0.02% NLS
Reconstitution	Reconstitute in sterile water for a stock solution.

 Tel: 1-631-559-9269 1-516-512-3133

 Email: info@creative-biomart.com  Fax: 1-631-938-8127

 45-1 Ramsey Road, Shirley, NY 11967, USA

Shipping They are shipped out with dry ice/blue ice unless customers require otherwise.

GENE INFORMATION

Gene Name SIGLEC5 sialic acid binding Ig-like lectin 5 [Homo sapiens (human)]

Official Symbol SIGLEC5

Synonyms SIGLEC5; sialic acid binding Ig-like lectin 5; CD33L2; sialic acid-binding Ig-like lectin 5; CD170; OB BP2; SIGLEC 5; CD33 antigen-like 2; OB-binding protein 2; obesity-binding protein 2; sialic acid-binding immunoglobulin-like lectin 5; OBBP2; OB-BP2; SIGLEC-5;

Gene ID 8778

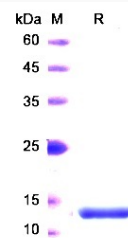
mRNA Refseq NM_003830

Protein Refseq NP_003821

MIM 604200

UniProt ID O15389

SDS-PAGE



 Tel: 1-631-559-9269 1-516-512-3133

 Email: info@creative-biomart.com  Fax: 1-631-938-8127

 45-1 Ramsey Road, Shirley, NY 11967, USA