

## Recombinant Human SIGLEC5 Protein, C-His-tagged

Cat. No. SIGLEC5-153H Lot. No. (See product label)

### SPECIFICATION

<b>Product Overview</b>	Recombinant Human SIGLEC5 Protein with C-His tag was expressed in E. coli.
<b>Species</b>	Human
<b>Source</b>	E.coli
<b>ProteinLength</b>	17-441 a.a.
<b>Description</b>	<p>Two families of mammalian lectin-like adhesion molecules bind glycoconjugate ligands in a sialic acid-dependent manner: the selectins and the sialoadhesins. The sialic acid-binding immunoglobulin superfamily lectins, designated siglecs or sialoadhesins, are immunoglobulin superfamily members recognizing sialylated ligands. Siglec-5 binds equally to <math>\alpha</math>2,3-linked and <math>\alpha</math>2,6-linked sialic acid. There exist four isoforms of hSiglec-5 possessing three (hSiglec-5-3L and -3C) or four (hSiglec-5-4L and -4S) extracellular domains linked to long (hSiglec-5-3L and -4L) or short (hSiglec-5-4S) cytoplasmic tails or existing as a soluble isoform (hSiglec-5-3C). Siglec-5 is expressed by monocytes and neutrophils, but is absent from leukemic cell lines representing early stages of myelomonocytic differentiation. Siglec-5 may play a role in the diagnosis and monitoring of acute myeloid leukemia (AML).</p>
<b>Molecular Mass</b>	~47 kDa
<b>AA Sequence</b>	<p>EKPVYELQVQKSVTVQEGLCVLVPCSFSPWRSWYSSPLYVYWFRDGEIPYYAEV  VATNNPDRRVKPETQGRFRLGQKKNCSLSIGDARMEDTGSYFFRVERGRDVK  YSYQQNKLNLLEVTAIEKPDHFLEPLESGRPTLRLSCSLPGSCEAGPPLTFSWTGNAL</p>

 Tel: 1-631-559-9269 1-516-512-3133

 Email: [info@creative-biomart.com](mailto:info@creative-biomart.com)  Fax: 1-631-938-8127

 45-1 Ramsey Road, Shirley, NY 11967, USA

SPLDPETTRSSELTLTPRPEDHGTNLTCQMKRQGAQVTTERTVQLNVSYPQTITIF  
 RINGIALEILQNTSYLPVLEGQALRLLCDAPSNPPAHLWSFQGSPALNATPISNTGILEL  
 RRVRSAAEEGGFTCRAQHPLGFLQIFLNLSVYSLPQLLGPSCSWEAEGHCRCSFRA  
 RPAPSLCWRLEEKPLEGNSSQGSFKVNSSSAGPWANSSLILHGGLSSDLKVSCKA  
 WNIYGSQSGSVLLLQGRSNLGTGVVPAAL

**Purity** Transferred into competent cells and the supernatant was purified by NI column affinity chromatography and the purity is > 85% (by SDS-PAGE).

**Notes** For research use only, not for use in diagnostic procedure.

**Storage** Store at 4 centigrade short term. Aliquot and store at -20 centigrade long term. Avoid freeze-thaw cycles.

**Concentration** ≥0.5 mg/mL

**Storage Buffer** PBS, 4M Urea, pH7.4

## GENE INFORMATION

**Gene Name** SIGLEC5 sialic acid binding Ig-like lectin 5 [ Homo sapiens (human) ]

**Official Symbol** SIGLEC5

**Synonyms** SIGLEC5; sialic acid binding Ig-like lectin 5; CD33L2; sialic acid-binding Ig-like lectin 5; CD170; OB BP2; SIGLEC 5; CD33 antigen-like 2; OB-binding protein 2; obesity-binding protein 2; sialic acid-binding immunoglobulin-like lectin 5; OBBP2; OB-BP2; SIGLEC-5;

**Gene ID** 8778

 Tel: 1-631-559-9269 1-516-512-3133

 Email: [info@creative-biomart.com](mailto:info@creative-biomart.com)  Fax: 1-631-938-8127

 45-1 Ramsey Road, Shirley, NY 11967, USA

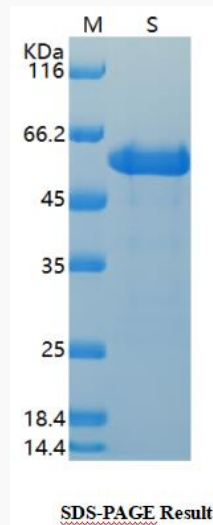
mRNA Refseq [NM\\_003830](#)

Protein Refseq [NP\\_003821](#)

MIM [604200](#)

UniProt ID [O15389](#)

**SDS-PAGE**



 Tel: 1-631-559-9269 1-516-512-3133

 Email: [info@creative-biomart.com](mailto:info@creative-biomart.com)  Fax: 1-631-938-8127

 45-1 Ramsey Road, Shirley, NY 11967, USA