

Recombinant Human SIGLEC5 protein, His-Avi-tagged, Biotinylated

Cat. No. SIGLEC5-1657H Lot. No. (See product label)

SPECIFICATION

Product Overview	Biotinylated Recombinant Human SIGLEC5 protein(O15389)(Glu17-Thr434), fused with C-terminal His and Avi tag, was expressed in HEK293.
Species	Human
Source	HEK293
ProteinLength	Glu17-Thr434
Tag	C-His-Avi
Conjugation/Label	Biotin
Form	Supplied as 0.22µm filtered solution in PBS, 350mM NaCl (pH 7.4).
Bio-activity	
Molecular Mass	The protein has a predicted MW of 49.3 kDa. Due to glycosylation, the protein migrates to 70-80 kDa based on Tris-Bis PAGE result.
Endotoxin	Less than 1EU per µg by the LAL method.
Purity	> 95% as determined by Tris-Bis PAGE; > 95% as determined by SEC-HPLC.

 Tel: 1-631-559-9269 1-516-512-3133

 Email: info@creative-biomart.com  Fax: 1-631-938-8127

 45-1 Ramsey Road, Shirley, NY 11967, USA

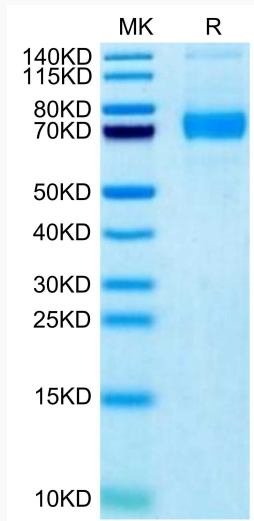
Storage	Valid for 12 months from date of receipt when stored at -80°C.;Recommend to aliquot the protein into smaller quantities for optimal storage. Please do not repeated freeze-thaw cycles.
Reconstitution	It is recommended that sterile water be added to the vial to prepare a stock solution of 0.2 ug/ul. Centrifuge the vial at 4°C before opening to recover the entire contents.
Conjugation	Biotin
GENE INFORMATION	
Gene Name	SIGLEC5 sialic acid binding Ig-like lectin 5 [Homo sapiens]
Official Symbol	SIGLEC5
Synonyms	SIGLEC5; sialic acid binding Ig-like lectin 5; CD33L2; sialic acid-binding Ig-like lectin 5; CD170; OB BP2; SIGLEC 5; CD33 antigen-like 2; OB-binding protein 2; obesity-binding protein 2; sialic acid-binding immunoglobulin-like lectin 5; OBBP2; OB-BP2; SIGLEC-5;
Gene ID	8778
mRNA Refseq	NM_003830
Protein Refseq	NP_003821
MIM	604200
UniProt ID	O15389

 Tel: 1-631-559-9269 1-516-512-3133

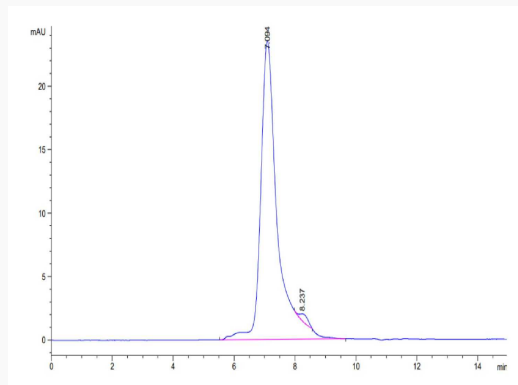
 Email: info@creative-biomart.com  Fax: 1-631-938-8127

 45-1 Ramsey Road, Shirley, NY 11967, USA

Tris-Bis PAGE



SEC-HPLC



 Tel: 1-631-559-9269 1-516-512-3133

 Email: info@creative-biomart.com  Fax: 1-631-938-8127

 45-1 Ramsey Road, Shirley, NY 11967, USA