

Recombinant Human SIGLEC5 Protein (17-441), C-Fc/Avi-tagged

Cat. No. SIGLEC5-35H **Lot. No.** (See product label)

SPECIFICATION

Product Overview	Human secreted Sialic Acid Binding Ig Like Lectin 5 (Siglec5)-Fc fusion protein, also known as CD33L2 and OBBP2, GenBank Accession No. NM_003830, a.a. 17-441, fused at the C-terminus of the Fc portion of human IgG1, with C-terminal Avi-tag, expressed in a HEK293 cell expression system.
Species	Human
Source	HEK293
ProteinLength	17-441
Description	This gene encodes a member of the sialic acid-binding immunoglobulin-like lectin (Siglec) family. These cell surface lectins are characterized by structural motifs in the immunoglobulin (Ig)-like domains and sialic acid recognition sites in the first Ig V set domain. The encoded protein is a member of the CD33-related subset of Siglecs and inhibits the activation of several cell types including monocytes, macrophages and neutrophils. Binding of group B Streptococcus (GBS) to the encoded protein plays a role in GBS immune evasion.
Form	Aqueous buffer solution.
Molecular Mass	76 kDa
Notes	Thaw on ice and gently mix prior to use. DO NOT VORTEX. Perform a quick spin

 Tel: 1-631-559-9269 1-516-512-3133

 Email: info@creative-biomart.com  Fax: 1-631-938-8127

 45-1 Ramsey Road, Shirley, NY 11967, USA

before opening. Aliquot into small volumes and flash freeze for long term storage. Avoid multiple freeze/thaw cycles.

Storage At least 6 months at –80 centigrade.

Storage Buffer 8 mM Phosphate, pH 7.4, 110 mM NaCl, 2.2 mM KCl, and 20% glycerol.

Shipping At -80 centigrade

Warning Avoid freeze/thaw cycles.

GENE INFORMATION

Gene Name [SIGLEC5 sialic acid binding Ig like lectin 5 \[Homo sapiens \(human\) \]](#)

Official Symbol [SIGLEC5](#)

Synonyms SIGLEC5; sialic acid binding Ig like lectin 5; CD170; OBBP2; CD33L2; OB-BP2; SIGLEC-5; sialic acid-binding Ig-like lectin 5; CD33 antigen-like 2; OB-binding protein 2; obesity-binding protein 2; sialic acid-binding immunoglobulin-like lectin 5

Gene ID [8778](#)

mRNA Refseq [NM_003830](#)

Protein Refseq [NP_003821](#)

MIM [604200](#)

UniProt ID [O15389](#)

 Tel: 1-631-559-9269 1-516-512-3133

 Email: info@creative-biomart.com  Fax: 1-631-938-8127

 45-1 Ramsey Road, Shirley, NY 11967, USA

SDS-PAGE

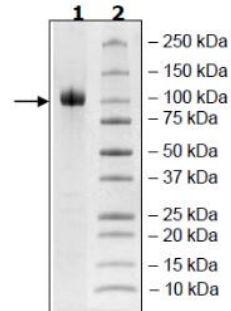
**4-20% SDS-PAGE
Coomassie staining**

Lane 1:
4µg Siglec5

Lane 2:
Protein Marker

MW: 76 kDa + glycans

Purity: ≥90%



 Tel: 1-631-559-9269 1-516-512-3133

 Email: info@creative-biomart.com  Fax: 1-631-938-8127

 45-1 Ramsey Road, Shirley, NY 11967, USA